

# HIV/AIDS SEMI-ANNUAL SURVEILLANCE SUMMARY

**January 2008**

**Cases Reported as of December 31, 2007**



*Enriching Lives*

## **HIV EPIDEMIOLOGY PROGRAM**

600 S. Commonwealth Avenue  
Suite 1920

Los Angeles, CA 90005

Phone: (213) 351-8196

Fax: (213) 487-9386

[www.lapublichealth.org/hiv](http://www.lapublichealth.org/hiv)



**JONATHAN E. FIELDING, M.D., M.P.H.**  
Director and Health Officer

**JONATHAN E. FREEDMAN**  
Acting Chief Deputy

313 North Figueroa Street, Room 806  
Los Angeles, California 90012  
TEL (213) 240-8117 • FAX (213) 975-1273

## HIV Epidemiology Program

**Douglas Frye, M.D., M.P.H.**, Director  
600 South Commonwealth Avenue, Suite 1920  
Los Angeles, California 90005  
TEL (213) 351-8196 • FAX (213) 487-9386

[www.lapublichealth.org/HIV](http://www.lapublichealth.org/HIV)

### BOARD OF SUPERVISORS

**Gloria Molina**  
First District

**Yvonne B. Burke**  
Second District

**Zev Yaroslavsky**  
Third District

**Don Knabe**  
Fourth District

**Michael D. Antonovich**  
Fifth District

January 16, 2008

Dear Colleague:

Enclosed you will find the January 2008 issue of the *HIV/AIDS Semi-annual Surveillance Summary* for Los Angeles County. As of December 31, 2007, there have been 53,198 persons reported with AIDS, 22,455 of whom are living with AIDS.

We continue to have requests for analyses of new and prevalent cases of HIV (AIDS and non-AIDS) reported by name. While we have reported over 8,000 cases of non-AIDS HIV thus far by name, we still have a backlog of some 13,000 cases to investigate and report. Until such time as we can assure that the HIV registry is complete enough to be representative of HIV cases in Los Angeles County, these data will not be generally made available for further analysis or presented in detail in this summary report. For a crude estimate, please use the distribution of HIV cases found in Table 21 of cases reported between 2002 and 2006 using a non-name code. Thank you for your forbearance in this matter.

***To ensure protection of patient confidentiality, the new reporting regulations prohibit providers and laboratories from sending us reports by email or facsimile.*** Instead, please mail in your report to us in a double-envelope at: 600 S. Commonwealth Ave., Suite 1260, Los Angeles, CA 90005 or phone us at: (213) 351-8516.

Data presented in this summary report, and other HIV-related information, are available on our Web site at <http://lapublichealth.org/hiv/index.htm>. You may also request HIV and AIDS data by phone or by logging onto our Web site.

Sincerely,

Douglas M. Frye.

**NOTICE TO HEALTH CARE PROVIDERS AND OTHERS RESPONSIBLE FOR DISEASE REPORTING:**

California Code of Regulations, Title 17, Section 2500 requires that all diagnosed or suspected cases of AIDS as defined by CDC must be reported within seven (7) days to the Health Officer. In addition, California Code of Regulations, Title 17, Section 2600/2641.5-2643.20 require both health care providers and laboratories report HIV cases by name to the Health Officer within seven (7) days. To obtain more information on the HIV/AIDS reporting requirement, or to obtain case report forms or to report a case, please visit our web site: <http://www.lapublichealth.org/hiv/hivreporting.htm>, or contact the HIV Epidemiology Program, 600 South Commonwealth Avenue, Suite 1260, Los Angeles, CA 90005. Phone (213) 351-8516; Fax (213) 487-4683.

The *HIV/AIDS Surveillance Summary* is published semiannually by the HIV Epidemiology Program, Los Angeles County Department of Public Health. Copies of this report are available free of charge. Individuals or organizations may be added to the mailing list by contacting the HIV Epidemiology Program at the phone number or address listed above. This report is also available at our web site at [www.lapublichealth.org/hiv/index.htm](http://www.lapublichealth.org/hiv/index.htm).

Suggested Citation: HIV Epidemiology Program, Los Angeles County Department of Public Health.  
HIV/AIDS Surveillance Summary, January 2008: 1-29.

Los Angeles County Department of Public Health.....Jonathan E. Fielding, M.D, M.P.H.  
Director and Health Officer

Communicable Disease Control and Prevention .....Robert Kim-Farley, M.D., M.P.H.  
Director

HIV Epidemiology Program.....Douglas Frye, M.D., M.P.H.  
Director

Data Analysis Unit ..... Virginia Hu, M.P.H.  
Epidemiologist  
Zhijuan Sheng, M.S.  
Epidemiologist

Data Acquisition Unit.....Latonya Taylor, R.N., M.S.N./M.P.H.,C.N.S.  
Assistant Program Specialist

# CONTENTS

---

Surveillance Summary .....	1
Figure 1: AIDS Cases Reported and Diagnosed by Year, Los Angeles County, 1985- 2007 .....	2
Figure 2: Cases of AIDS by Year of Diagnosis and Deaths among AIDS Cases by Year of Death, Los Angeles County.....	3
Table 1: AIDS Cases, Deaths and Persons Living with AIDS by Year, Los Angeles County .....	3
Table 2: Cumulative Cases of AIDS by Gender, Age Group and Race/Ethnicity, Los Angeles County .....	4
Table 3: Cumulative Adult/Adolescent Cases of AIDS by Gender, Exposure Category and Race/Ethnicity, Los Angeles County.....	5
Table 4: Annual Adult/Adolescent Cases of AIDS and Rates per 100,000 by Gender, Year of Diagnosis and Race/Ethnicity, Los Angeles County.....	6
Table 5: Adult/Adolescent Cases of AIDS by Gender, Exposure Category and Year of Diagnosis, Los Angeles County.....	7
Table 6: White Adult/Adolescent Cases of AIDS by Gender, Exposure Category and Year of Diagnosis, Los Angeles County.....	8
Table 7: Black Adult/Adolescent Cases of AIDS by Gender, Exposure Category and Year of Diagnosis, Los Angeles County.....	9
Table 8: Hispanic Adult/Adolescent Cases of AIDS by Gender, Exposure Category and Year of Diagnosis, Los Angeles County.....	10
Table 9: Cumulative Pediatric Cases of AIDS by Exposure Category and Race/Ethnicity, Los Angeles County....	11
Table 10: Pediatric Cases of AIDS by Race/Ethnicity, Exposure Category and Year of Diagnosis, Los Angeles County.....	11
Table 11: Cumulative Adult/Adolescent and Pediatric Cases of Injection Drug-Associated AIDS by Gender, Exposure Category and Race/Ethnicity, Los Angeles County.....	12
Table 12: Cumulative Adult/Adolescent AIDS Indicator Conditions at Time of Diagnosis by Gender, Los Angeles County.....	13
Table 13: Annual Cases of AIDS and Rates per 100,000 by Service Planning Area/Health District of Residence and Year of Diagnosis, Los Angeles County.....	14
Table 14: Annual Cases of AIDS and Rates per 100,000 by City/Area of Residence and Year of Diagnosis, Top 35 Cities Ranked by 2006 Rate, Los Angeles County.....	15
Table 15: Reported Numbers and Rates per 100,000 for Persons Diagnosed with AIDS and Persons Living With AIDS as of December 31, 2007 by Gender, Age, Race/Ethnicity and Exposure Category, Los Angeles County.....	16
Table 16: Cumulative Number of Persons Diagnosed with AIDS by Gender, Age, Race/Ethnicity and Exposure Category for each Service Planning Area in Los Angeles County, 1982-2007 .....	17
Table 17: Number of Persons Diagnosed with AIDS and Rate per 100,000 in Year 2006 by Gender, Age, Race/Ethnicity and Exposure Category for each Service Planning Area in Los Angeles County .....	18

Table 18:	Persons Living With AIDS and Rate per 100,000 at the End of Calendar Year, by Gender, Age, Race/Ethnicity and Exposure Category, Los Angeles County .....	19
Table 19:	Persons Living With AIDS and Rate per 100,000 as of December 31, 2007 by Service Planning Area, Gender, Age, Race/Ethnicity and Exposure Category, Los Angeles County .....	20
Table 20:	Annual Deaths among AIDS Cases by Age Group, Race/Ethnicity, Gender, Exposure Category, and Service Planning Area in Los Angeles County .....	21
Table 21:	Characteristics of Persons Reported with Non-AIDS HIV by Non-Name Code - Final, July 1, 2002 - April 17, 2006, Los Angeles County.....	22
Figure 3:	Male Adult/Adolescent AIDS Rates by Race/Ethnicity and Year of Diagnosis, Los Angeles County, 1992-2006 .....	23
Figure 4:	Female Adult/Adolescent AIDS Rates by Race/Ethnicity and Year of Diagnosis, Los Angeles County, 1992-2006 .....	23
Figure 5:	Percent of Adult/Adolescent AIDS Cases by Race/Ethnicity and Year of Diagnosis, Los Angeles County, 1992-2007 .....	24
Figure 6:	Number of Adult/Adolescent AIDS Cases by Race/Ethnicity and Year of Diagnosis, Los Angeles County, 1992-2007 .....	24
Figure 7:	Percent of Adult/Adolescent AIDS Cases by Mode of Exposure and Year of Diagnosis, Los Angeles County, 1992-2007 .....	25
Figure 8:	Adjusted Mode of Exposure for Persons Living with AIDS as of December 31, 2007 by Gender in Los Angeles County.....	25
Figure 9	Persons Reported Living with AIDS as of 12/31/2007 and Living AIDS Rate per 100,000 Population by Service Planning Area in Los Angeles County .....	26
Appendix 1:	1993 Revised Classification System for HIV Infection and Expanded Surveillance Case Definition for Adolescents and Adults .....	27
Appendix 2:	Technical Notes .....	28
Figure 10:	Persons Reported Living with AIDS as of 12/31/2007 by City/Area and Service Planning Area in Los Angeles County.....	Back Cover

---

**Los Angeles County Department of Public Health  
HIV Epidemiology Program  
AIDS Semi-annual Surveillance Summary, July-December 2007**

**Los Angeles County<sup>1</sup>**

New cases reported this period	777
Deaths reported this period	153
Cumulative cases	53,198
Cumulative deaths	30,743
Living cases	22,455

---

**California<sup>2</sup>**

Cumulative cases	147,821
Cumulative deaths	84,532
Living cases	63,289

---

**United States<sup>3</sup>**

Cumulative cases	984,155
Cumulative deaths	550,394
Living cases	433,761

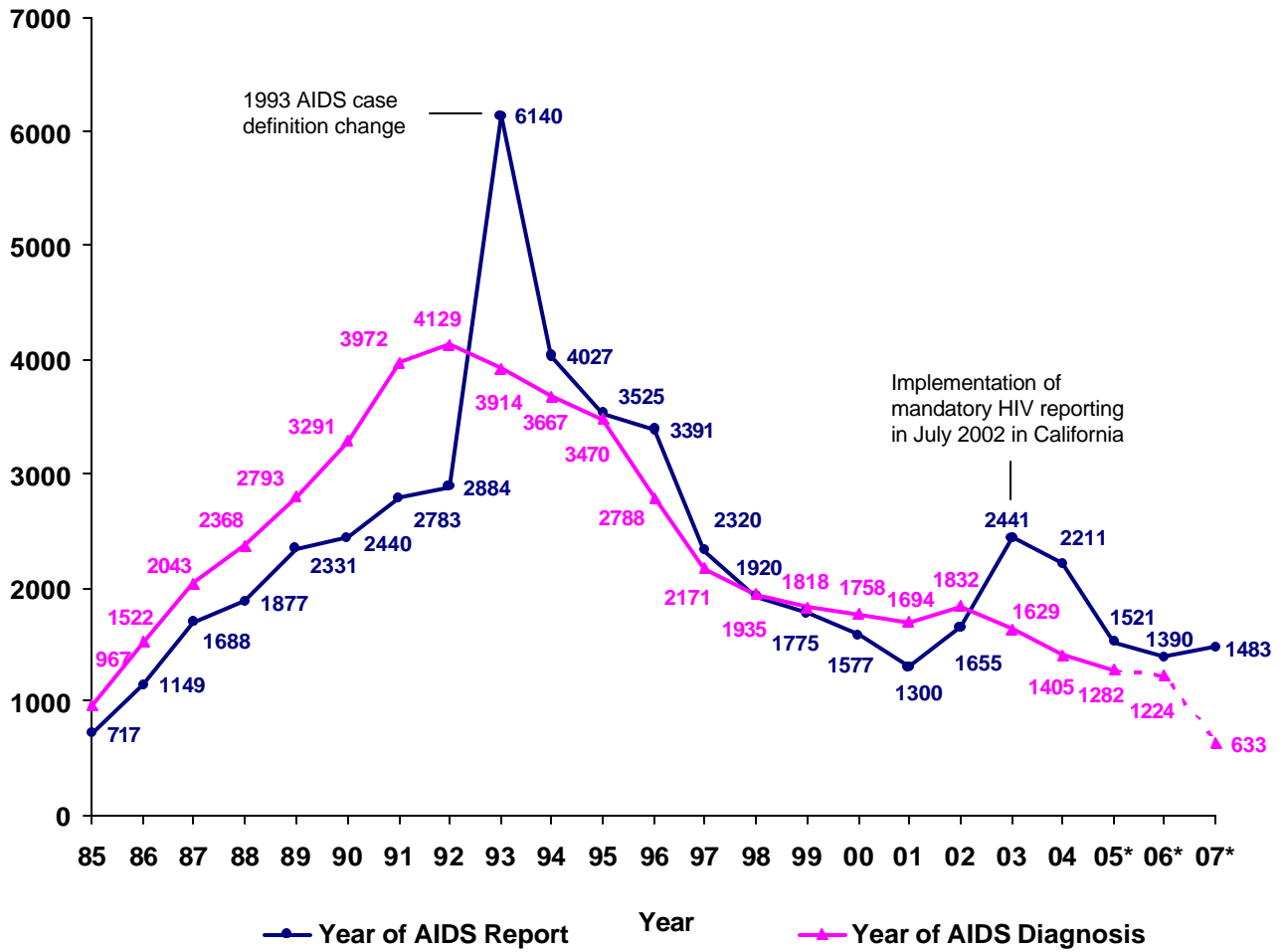
---

<sup>1</sup> Includes all cases reported to the HIV Epidemiology Program as of December 31, 2007.

<sup>2</sup> California Office of AIDS. AIDS Surveillance Report for California, December 31, 2007.

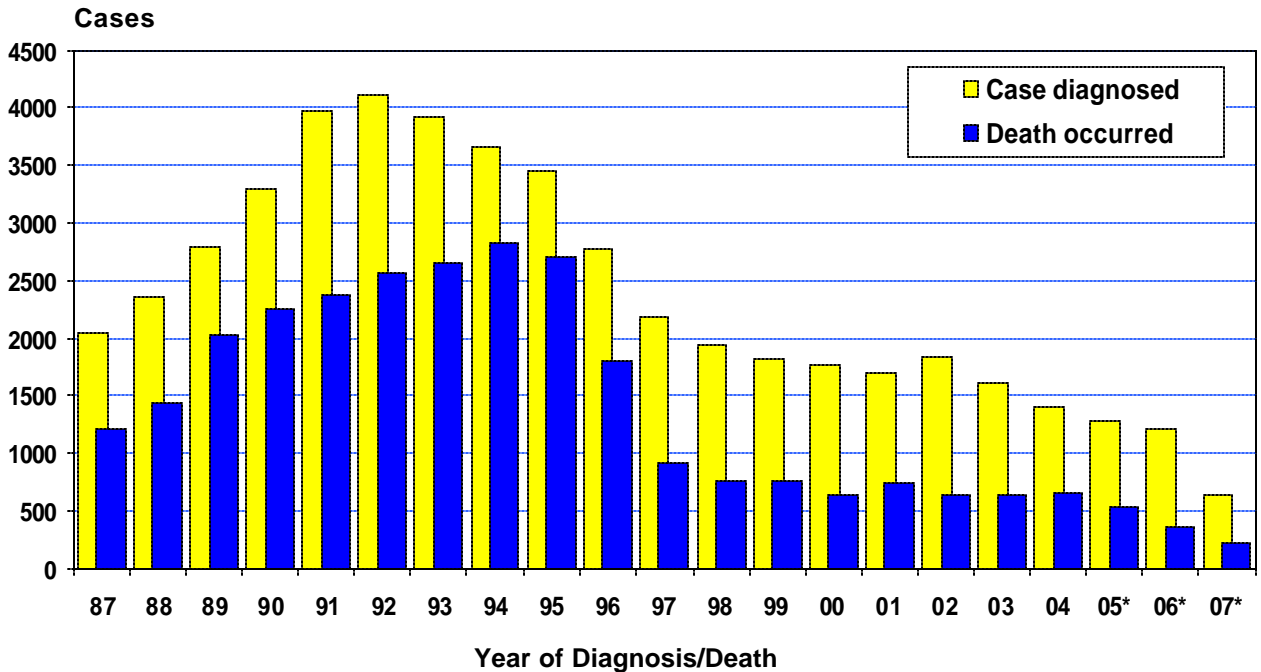
<sup>3</sup> Centers for Disease Control and Prevention. HIV/AIDS Surveillance Report, 2005. Vol. 17. Rev ed. Atlanta. The figures do not represent an enumeration of actual cases for this category. Rather, it is a point estimate of cases for this category that has been adjusted for reporting delay, but not adjusted for incomplete reporting.

**FIGURE 1. AIDS CASES REPORTED AND DIAGNOSED BY YEAR, LOS ANGELES COUNTY, 1985-2007**



\* Cases diagnosed in 2005-2007 are provisional due to reporting delay.

**FIGURE 2. CASES OF AIDS BY YEAR OF DIAGNOSIS AND DEATHS AMONG AIDS CASES BY YEAR OF DEATH, LOS ANGELES COUNTY**



\* Data are provisional for 2005-2007.

**TABLE 1. AIDS CASES, DEATHS AND PERSONS LIVING WITH AIDS BY YEAR REPORTED BY DECEMBER 31, 2007, LOS ANGELES COUNTY**

Year	No. of Cases diagnosed	No. of Deaths occurred <sup>1</sup>	No. of Living cases <sup>2</sup>
1982- 1989	10586	6666	3920
1990	3291	2260	4951
1991	3972	2383	6540
1992	4129	2569	8100
1993	3914	2657	9357
1994	3667	2826	10198
1995	3470	2699	10969
1996	2788	1797	11960
1997	2171	929	13202
1998	1935	752	14385
1999	1818	757	15446
2000	1758	648	16556
2001	1694	746	17504
2002	1832	633	18703
2003	1629	636	19696
2004	1405	652	20449
2005 (3)	1282	546	21185
2006 (3)	1224	365	22044
2007 (3)	633	222	22455
<b>Cumulative</b>	<b>53198</b>	<b>30743</b>	

1. Total death includes cases whose date of death is unknown.
2. Includes persons living with AIDS at the end of each year.
3. Data are provisional due to reporting delay.

TABLE 2. CUMULATIVE CASES OF AIDS BY GENDER, AGE GROUP AND RACE/ETHNICITY  
 REPORTED BY DECEMBER 31, 2007  
 LOS ANGELES COUNTY

Age at Diagnosis (years)	Race/Ethnicity					
	White No. (%)	Black No. (%)	Hispanic No. (%)	Asian (1) No. (%)	AI/AN (2) No. (%)	Total (3) No. (%)
<b>MALE</b>						
<13	25 (<1)	51 ( 1)	58 (<1)	<5 ( -)	<5 ( -)	138 (<1)
13-19	38 (<1)	54 ( 1)	115 ( 1)	5 (<1)	<5 ( -)	217 (<1)
20-29	2727 ( 12)	1477 ( 16)	3330 ( 22)	157 ( 14)	50 ( 26)	7751 ( 16)
30-39	10187 ( 44)	3923 ( 43)	6769 ( 46)	477 ( 42)	81 ( 42)	21486 ( 44)
40-49	6867 ( 30)	2600 ( 28)	3198 ( 22)	343 ( 30)	41 ( 21)	13081 ( 27)
50-59	2545 ( 11)	842 ( 9)	1040 ( 7)	117 ( 10)	10 ( 5)	4562 ( 9)
60+	843 ( 4)	232 ( 3)	362 ( 2)	30 ( 3)	<5 ( -)	1473 ( 3)
Male subtotal	23232	9179	14872	1132	191	48708
[% of subtotal]	[ 48]	[ 19]	[ 31]	[ 2]	[ <1]	[100]
<b>FEMALE</b>						
<13	19 ( 2)	35 ( 2)	55 ( 3)	<5 ( -)	<5 ( -)	112 ( 2)
13-19	11 ( 1)	20 ( 1)	32 ( 2)	<5 ( -)	<5 ( -)	67 ( 1)
20-29	163 ( 17)	341 ( 20)	396 ( 23)	14 ( 13)	7 ( 24)	922 ( 21)
30-39	356 ( 37)	645 ( 38)	596 ( 35)	31 ( 29)	10 ( 34)	1642 ( 37)
40-49	235 ( 24)	431 ( 26)	355 ( 21)	35 ( 33)	5 ( 17)	1065 ( 24)
50-59	102 ( 11)	164 ( 10)	175 ( 10)	14 ( 13)	<5 ( -)	458 ( 10)
60+	78 ( 8)	53 ( 3)	83 ( 5)	7 ( 7)	<5 ( -)	224 ( 5)
Female subtotal	964	1689	1692	107	29	4490
[% of subtotal]	[ 21]	[ 38]	[ 38]	[ 2]	[ 1]	[100]
<b>BOTH</b>						
<13	44 (<1)	86 ( 1)	113 ( 1)	6 (<1)	<5 ( -)	250 (<1)
13-19	49 (<1)	74 ( 1)	147 ( 1)	8 ( 1)	5 ( 2)	284 ( 1)
20-29	2890 ( 12)	1818 ( 17)	3726 ( 22)	171 ( 14)	57 ( 26)	8673 ( 16)
30-39	10543 ( 44)	4568 ( 42)	7365 ( 44)	508 ( 41)	91 ( 41)	23128 ( 43)
40-49	7102 ( 29)	3031 ( 28)	3553 ( 21)	378 ( 31)	46 ( 21)	14146 ( 27)
50-59	2647 ( 11)	1006 ( 9)	1215 ( 7)	131 ( 11)	13 ( 6)	5020 ( 9)
60+	921 ( 4)	285 ( 3)	445 ( 3)	37 ( 3)	7 ( 3)	1697 ( 3)
Total	24196	10868	16564	1239	220	53198
[% of total]	[ 45]	[ 20]	[ 31]	[ 2]	[ <1]	[100]

1. Includes 11 Burmese, 53 Cambodian, 108 Chinese, 355 Filipino, 18 Guamanian, 40 Hawaiian, 21 Indian, 19 Indonesian, 131 Japanese, 47 Korean, <5 Loatian, 10 Malayan, <5 N Marianan, 10 Pacific Islander, <5 Pakistani, 30 Samoan, <5 Singaporean, <5 Sri Lankan, <5 Tahitian, 30 Taiwanese, 97 Thai, <5 Tongan, and 102 Vietnamese; 141 are of unknown Asian ethnicity.
2. AI/AN=American Indian/Alaska Native.
3. Includes 102 males and 9 females who have multiple races/ethnicities or have missing information on race/ethnicity.

TABLE 3. CUMULATIVE ADULT/ADOLESCENT CASES OF AIDS BY GENDER, EXPOSURE CATEGORY AND RACE/ETHNICITY  
 REPORTED BY DECEMBER 31, 2007  
 LOS ANGELES COUNTY

Adult/Adolescent Exposure Category (1)	Race/Ethnicity					Total (3) No. (%)
	White No. (%)	Black No. (%)	Hispanic No. (%)	Asian No. (%)	AI/AN (2) No. (%)	
<b>MALE</b>						
Male-male sexual contact	19407 ( 84)	5846 ( 64)	10314 ( 70)	880 ( 78)	133 ( 70)	36654 ( 75)
Injection drug user (IDU)	768 ( 3)	926 ( 10)	821 ( 6)	16 ( 1)	11 ( 6)	2546 ( 5)
Male-male sexual contact/IDU	1851 ( 8)	872 ( 10)	860 ( 6)	38 ( 3)	35 ( 18)	3666 ( 8)
Hemophilia or coagulation disorder	98 ( <1)	22 ( <1)	41 ( <1)	11 ( 1)	<5 ( -)	173 ( <1)
Heterosexual contact (4)	155 ( 1)	268 ( 3)	435 ( 3)	21 ( 2)	<5 ( -)	880 ( 2)
Transfusion recipient	140 ( 1)	43 ( <1)	102 ( 1)	20 ( 2)	<5 ( -)	306 ( 1)
Mother with/at risk for HIV	<5 ( -)	6 ( <1)	7 ( <1)	<5 ( -)	<5 ( -)	17 ( <1)
Other/Undetermined	785 ( 3)	1145 ( 13)	2234 ( 15)	143 ( 13)	9 ( 5)	4328 ( 9)
Male subtotal	23207	9128	14814	1129	190	48570
[% of subtotal]	[ 48]	[ 19]	[ 31]	[ 2]	[ <1]	[100]
<b>FEMALE</b>						
Injection drug user (IDU)	330 ( 35)	455 ( 28)	227 ( 14)	10 ( 10)	13 ( 45)	1041 ( 24)
Hemophilia or coagulation disorder	8 ( 1)	<5 ( -)	<5 ( -)	<5 ( -)	<5 ( -)	14 ( <1)
Heterosexual contact (4)	374 ( 40)	686 ( 41)	845 ( 52)	50 ( 48)	9 ( 31)	1967 ( 45)
Transfusion recipient	80 ( 8)	56 ( 3)	106 ( 6)	18 ( 17)	<5 ( -)	260 ( 6)
Mother with/at risk for HIV	<5 ( -)	<5 ( -)	5 ( <1)	<5 ( -)	<5 ( -)	10 ( <1)
Other/Undetermined	152 ( 16)	450 ( 27)	452 ( 28)	25 ( 24)	7 ( 24)	1086 ( 25)
Female subtotal	945	1654	1637	104	29	4378
[% of subtotal]	[ 22]	[ 38]	[ 37]	[ 2]	[ 1]	[100]
<b>BOTH</b>						
Male-male sexual contact	19407 ( 80)	5846 ( 54)	10314 ( 63)	880 ( 71)	133 ( 61)	36654 ( 69)
Injection drug user (IDU)	1098 ( 5)	1381 ( 13)	1048 ( 6)	26 ( 2)	24 ( 11)	3587 ( 7)
Male-male sexual contact/IDU	1851 ( 8)	872 ( 8)	860 ( 5)	38 ( 3)	35 ( 16)	3666 ( 7)
Hemophilia or coagulation disorder	106 ( <1)	26 ( <1)	43 ( <1)	11 ( 1)	<5 ( -)	187 ( <1)
Heterosexual contact (4)	529 ( 2)	954 ( 9)	1280 ( 8)	71 ( 6)	9 ( 4)	2847 ( 5)
Transfusion recipient	220 ( 1)	99 ( 1)	208 ( 1)	38 ( 3)	<5 ( -)	566 ( 1)
Mother with/at risk for HIV	<5 ( -)	9 ( <1)	12 ( <1)	<5 ( -)	<5 ( -)	27 ( <1)
Other/Undetermined	937 ( 4)	1595 ( 15)	2686 ( 16)	168 ( 14)	16 ( 7)	5414 ( 10)
Total	24152	10782	16451	1233	219	52948
[% of total]	[ 46]	[ 20]	[ 31]	[ 2]	[ <1]	[100]

1. Exposure categories are ordered hierarchically. Except for the combination listed, cases with multiple exposure categories are included in the category listed first.
2. AI/AN=American Indian/Alaska Native.
3. Includes 102 males and 9 females who have multiple races/ethnicities or have missing information on race/ethnicity.
4. Heterosexual contact with a person who is HIV-infected or at increased risk for HIV.

TABLE 4. ANNUAL ADULT/ADOLESCENT CASES OF AIDS AND RATES PER 100,000 (1)  
 BY GENDER, YEAR OF DIAGNOSIS AND RACE/ETHNICITY  
 REPORTED BY DECEMBER 31, 2007  
 LOS ANGELES COUNTY

Year of Diagnosis	Race/Ethnicity					Total (2) No. (Rate)
	White No. (Rate)	Black No. (Rate)	Hispanic No. (Rate)	Asian No. (Rate)	AI/AN No. (Rate)	
<b>MALE</b>						
1998	577 ( 43)	385 (115)	682 ( 46)	53 ( 12)	9 ( 87)	1711 ( 47)
1999	505 ( 38)	355 (107)	673 ( 44)	55 ( 12)	6 ( 58)	1600 ( 44)
2000	501 ( 38)	331 ( 98)	653 ( 42)	30 ( 6)	8 ( 73)	1524 ( 41)
2001	455 ( 35)	325 ( 97)	625 ( 38)	42 ( 9)	9 ( 72)	1463 ( 39)
2002	540 ( 41)	322 ( 95)	671 ( 40)	55 ( 11)	8 ( 64)	1600 ( 41)
2003	524 ( 39)	248 ( 72)	599 ( 35)	52 ( 10)	7 ( 56)	1434 ( 36)
2004	368 ( 28)	229 ( 63)	567 ( 33)	49 ( 9)	6 ( 46)	1225 ( 31)
2005 (3)	327 ( 24)	248 ( 70)	483 ( 27)	45 ( 8)	<5 ( -)	1109 ( 28)
2006 (3)	342 ( 26)	230 ( 67)	438 ( 24)	42 ( 8)	<5 ( -)	1059 ( 26)
2007 (3)	166 ( 12)	114 ( 33)	249 ( 14)	25 ( 5)	<5 ( -)	561 ( 14)
<b>Cumulative</b>						
Male subtotal (4)	23207	9128	14814	1129	190	48570
<b>FEMALE</b>						
1998	41 ( 3)	78 ( 19)	95 ( 6)	<5 ( -)	<5 ( -)	221 ( 6)
1999	35 ( 3)	96 ( 24)	79 ( 5)	6 ( 1)	<5 ( -)	216 ( 6)
2000	44 ( 3)	83 ( 21)	99 ( 6)	<5 ( -)	<5 ( -)	231 ( 6)
2001	34 ( 3)	78 ( 19)	105 ( 6)	8 ( 1)	<5 ( -)	227 ( 6)
2002	39 ( 3)	78 ( 19)	102 ( 6)	8 ( 1)	<5 ( -)	229 ( 6)
2003	28 ( 2)	69 ( 17)	91 ( 5)	5 ( 1)	<5 ( -)	194 ( 5)
2004	34 ( 2)	72 ( 17)	65 ( 4)	5 ( 1)	<5 ( -)	178 ( 4)
2005 (3)	24 ( 2)	74 ( 18)	66 ( 4)	6 ( 1)	<5 ( -)	171 ( 4)
2006 (3)	19 ( 1)	67 ( 16)	72 ( 4)	<5 ( -)	<5 ( -)	165 ( 4)
2007 (3)	11 ( 1)	31 ( 7)	27 ( 2)	<5 ( -)	<5 ( -)	72 ( 2)
<b>Cumulative</b>						
Female subtotal (4)	945	1654	1637	104	29	4378
<b>BOTH</b>						
1998	618 ( 22)	463 ( 63)	777 ( 26)	57 ( 6)	12 ( 56)	1932 ( 26)
1999	540 ( 20)	451 ( 61)	752 ( 25)	61 ( 6)	6 ( 28)	1816 ( 24)
2000	545 ( 20)	414 ( 56)	752 ( 24)	34 ( 3)	9 ( 40)	1755 ( 23)
2001	489 ( 18)	403 ( 55)	730 ( 22)	50 ( 5)	11 ( 43)	1690 ( 22)
2002	579 ( 22)	400 ( 54)	773 ( 23)	63 ( 6)	9 ( 35)	1829 ( 23)
2003	552 ( 20)	317 ( 42)	690 ( 20)	57 ( 5)	8 ( 31)	1628 ( 20)
2004	402 ( 15)	301 ( 38)	632 ( 18)	54 ( 5)	7 ( 26)	1403 ( 17)
2005 (3)	351 ( 13)	322 ( 42)	549 ( 15)	51 ( 4)	3 ( 11)	1280 ( 16)
2006 (3)	361 ( 13)	297 ( 39)	510 ( 14)	46 ( 4)	5 ( 19)	1224 ( 15)
2007 (3)	177 ( 7)	145 ( 19)	276 ( 8)	28 ( 2)	4 ( 15)	633 ( 8)
<b>Cumulative Total (4)</b>	<b>24152</b>	<b>10782</b>	<b>16451</b>	<b>1233</b>	<b>219</b>	<b>52948</b>

1. Rates are based on population estimates for 1998-2006. Rates for 2007 are calculated using population estimates for 2006. Rates based on observations fewer than 20 may not be reliable (see Technical Notes, page 28).
2. Total includes persons who have multiple races/ethnicities or have missing information on race/ethnicity.
3. Data are provisional due to reporting delay.
4. Includes persons diagnosed since 1982.

TABLE 5. ADULT/ADOLESCENT CASES OF AIDS BY GENDER, EXPOSURE CATEGORY AND YEAR OF DIAGNOSIS, REPORTED BY DECEMBER 31, 2007, LOS ANGELES COUNTY

Adult/Adolescent Exposure Category (1)	Year of Diagnosis									Cumulative 1982-2007 No. (%)
	1999 No. (%)	2000 No. (%)	2001 No. (%)	2002 No. (%)	2003 No. (%)	2004 No. (%)	2005(2) No. (%)	2006(2) No. (%)	2007(2) No. (%)	
<b>MALE</b>										
Male-male sexual contact	1065 ( 67)	994 ( 65)	951 ( 65)	1060 ( 66)	984 ( 69)	808 ( 66)	718 ( 65)	711 ( 67)	363 ( 65)	36654 ( 75)
Injection drug user (IDU)	75 ( 5)	91 ( 6)	92 ( 6)	82 ( 5)	62 ( 4)	60 ( 5)	53 ( 5)	36 ( 3)	13 ( 2)	2546 ( 5)
Male-male sexual contact/IDU	112 ( 7)	120 ( 8)	111 ( 8)	116 ( 7)	106 ( 7)	71 ( 6)	61 ( 6)	77 ( 7)	43 ( 8)	3666 ( 8)
Hemophilia or coagulation disorder	<5 ( -)	<5 ( -)	5 ( <1)	<5 ( -)	<5 ( -)	<5 ( -)	<5 ( -)	<5 ( -)	<5 ( -)	173 ( <1)
Heterosexual contact (3)	53 ( 3)	51 ( 3)	67 ( 5)	60 ( 4)	59 ( 4)	29 ( 2)	27 ( 2)	24 ( 2)	11 ( 2)	880 ( 2)
Transfusion recipient	<5 ( -)	<5 ( -)	<5 ( -)	7 ( <1)	<5 ( -)	<5 ( -)	<5 ( -)	<5 ( -)	<5 ( -)	306 ( 1)
Mother with/at risk for HIV	<5 ( -)	<5 ( -)	<5 ( -)	<5 ( -)	<5 ( -)	<5 ( -)	<5 ( -)	5 ( <1)	<5 ( -)	17 ( <1)
Other/Undetermined	290 ( 18)	259 ( 17)	232 ( 16)	273 ( 17)	217 ( 15)	256 ( 21)	245 ( 22)	203 ( 19)	128 ( 23)	4328 ( 9)
Male subtotal	1600	1524	1463	1600	1434	1225	1109	1059	561	48570
[% of annual cases]	[ 88]	[ 87]	[ 87]	[ 87]	[ 88]	[ 87]	[ 87]	[ 87]	[ 89]	[ 92]
<b>FEMALE</b>										
Injection drug user (IDU)	43 ( 20)	44 ( 19)	46 ( 20)	47 ( 21)	24 ( 12)	32 ( 18)	29 ( 17)	22 ( 13)	<5 ( -)	1041 ( 24)
Hemophilia or coagulation disorder	<5 ( -)	<5 ( -)	<5 ( -)	<5 ( -)	<5 ( -)	<5 ( -)	<5 ( -)	<5 ( -)	<5 ( -)	14 ( <1)
Heterosexual contact (3)	108 ( 50)	108 ( 47)	90 ( 40)	88 ( 38)	86 ( 44)	65 ( 37)	70 ( 41)	52 ( 32)	36 ( 50)	1967 ( 45)
Transfusion recipient	<5 ( -)	<5 ( -)	6 ( 3)	6 ( 3)	<5 ( -)	<5 ( -)	<5 ( -)	<5 ( -)	<5 ( -)	260 ( 6)
Mother with/at risk for HIV	<5 ( -)	<5 ( -)	<5 ( -)	<5 ( -)	<5 ( -)	<5 ( -)	<5 ( -)	<5 ( -)	<5 ( -)	10 ( <1)
Other/Undetermined	61 ( 28)	77 ( 33)	83 ( 37)	87 ( 38)	82 ( 42)	76 ( 43)	70 ( 41)	85 ( 52)	32 ( 44)	1086 ( 25)
Female subtotal	216	231	227	229	194	178	171	165	72	4378
[% of annual cases]	[ 12]	[ 13]	[ 13]	[ 13]	[ 12]	[ 13]	[ 13]	[ 13]	[ 11]	[ 8]
<b>Total</b>	<b>1816</b>	<b>1755</b>	<b>1690</b>	<b>1829</b>	<b>1628</b>	<b>1403</b>	<b>1280</b>	<b>1224</b>	<b>633</b>	<b>52948</b>

1. Exposure categories are ordered hierarchically, such that persons with multiple exposure categories are included in the category listed first.
2. Data are provisional due to reporting delay.
3. Heterosexual contact indicates contact with a person who is HIV-infected or at increased risk for HIV.

TABLE 6. WHITE ADULT/ADOLESCENT CASES OF AIDS BY GENDER, EXPOSURE CATEGORY AND YEAR OF DIAGNOSIS, REPORTED BY DECEMBER 31, 2007, LOS ANGELES COUNTY

Adult/Adolescent Exposure Category (1)	Year of Diagnosis									Cumulative 1982-2007 No. (%)
	1999 No. (%)	2000 No. (%)	2001 No. (%)	2002 No. (%)	2003 No. (%)	2004 No. (%)	2005(2) No. (%)	2006(2) No. (%)	2007(2) No. (%)	
<b>MALE</b>										
Male-male sexual contact	390 ( 77)	382 ( 76)	342 ( 75)	410 ( 76)	412 ( 79)	291 ( 79)	249 ( 76)	267 ( 78)	120 ( 72)	19407 ( 84)
Injection drug user (IDU)	19 ( 4)	20 ( 4)	28 ( 6)	19 ( 4)	17 ( 3)	15 ( 4)	20 ( 6)	10 ( 3)	6 ( 4)	768 ( 3)
Male-male sexual contact/IDU	42 ( 8)	53 ( 11)	47 ( 10)	58 ( 11)	54 ( 10)	31 ( 8)	29 ( 9)	30 ( 9)	21 ( 13)	1851 ( 8)
Hemophilia or coagulation disorder	<5 ( -)	<5 ( -)	<5 ( -)	<5 ( -)	<5 ( -)	<5 ( -)	<5 ( -)	<5 ( -)	<5 ( -)	98 (<1)
Heterosexual contact (3)	12 ( 2)	<5 ( -)	<5 ( -)	5 ( 1)	5 ( 1)	<5 ( -)	<5 ( -)	<5 ( -)	<5 ( -)	155 ( 1)
Transfusion recipient	<5 ( -)	<5 ( -)	<5 ( -)	<5 ( -)	<5 ( -)	<5 ( -)	<5 ( -)	<5 ( -)	<5 ( -)	140 ( 1)
Mother with/at risk for HIV	<5 ( -)	<5 ( -)	<5 ( -)	<5 ( -)	<5 ( -)	<5 ( -)	<5 ( -)	<5 ( -)	<5 ( -)	<5 ( -)
Other/Undetermined	39 ( 8)	42 ( 8)	28 ( 6)	46 ( 9)	36 ( 7)	27 ( 7)	25 ( 8)	30 ( 9)	16 ( 10)	785 ( 3)
Male subtotal	505	501	455	540	524	368	327	342	166	23207
[% of annual cases]	[ 94]	[ 92]	[ 93]	[ 93]	[ 95]	[ 92]	[ 93]	[ 95]	[ 94]	[ 96]
<b>FEMALE</b>										
Injection drug user (IDU)	15 ( 43)	14 ( 32)	15 ( 44)	16 ( 41)	6 ( 21)	15 ( 44)	8 ( 33)	7 ( 37)	<5 ( -)	330 ( 35)
Hemophilia or coagulation disorder	<5 ( -)	<5 ( -)	<5 ( -)	<5 ( -)	<5 ( -)	<5 ( -)	<5 ( -)	<5 ( -)	<5 ( -)	8 ( 1)
Heterosexual contact (3)	17 ( 49)	20 ( 45)	11 ( 32)	10 ( 26)	9 ( 32)	8 ( 24)	5 ( 21)	8 ( 42)	<5 ( -)	374 ( 40)
Transfusion recipient	<5 ( -)	<5 ( -)	<5 ( -)	<5 ( -)	<5 ( -)	<5 ( -)	<5 ( -)	<5 ( -)	<5 ( -)	80 ( 8)
Mother with/at risk for HIV	<5 ( -)	<5 ( -)	<5 ( -)	<5 ( -)	<5 ( -)	<5 ( -)	<5 ( -)	<5 ( -)	<5 ( -)	<5 ( -)
Other/Undetermined	<5 ( -)	10 ( 23)	7 ( 21)	12 ( 31)	13 ( 46)	10 ( 29)	9 ( 38)	<5 ( -)	6 ( 55)	152 ( 16)
Female subtotal	35	44	34	39	28	34	24	19	11	945
[% of annual cases]	[ 6]	[ 8]	[ 7]	[ 7]	[ 5]	[ 8]	[ 7]	[ 5]	[ 6]	[ 4]
Total	540	545	489	579	552	402	351	361	177	24152

1. Exposure categories are ordered hierarchically, such that persons with multiple exposure categories are included in the category listed first.
2. Data are provisional due to reporting delay.
3. Heterosexual contact indicates contact with a person who is HIV-infected or at increased risk for HIV.

TABLE 7. BLACK ADULT/ADOLESCENT CASES OF AIDS BY GENDER, EXPOSURE CATEGORY AND YEAR OF DIAGNOSIS, REPORTED BY DECEMBER 31, 2007, LOS ANGELES COUNTY

Adult/Adolescent Exposure Category (1)	Year of Diagnosis									Cumulative 1982-2007 No. (%)
	1999 No. (%)	2000 No. (%)	2001 No. (%)	2002 No. (%)	2003 No. (%)	2004 No. (%)	2005(2) No. (%)	2006(2) No. (%)	2007(2) No. (%)	
<b>MALE</b>										
Male-male sexual contact	214 ( 60)	181 ( 55)	184 ( 57)	188 ( 58)	149 ( 60)	129 ( 56)	137 ( 55)	141 ( 61)	67 ( 59)	5846 ( 64)
Injection drug user (IDU)	22 ( 6)	34 ( 10)	31 ( 10)	27 ( 8)	18 ( 7)	15 ( 7)	16 ( 6)	9 ( 4)	<5 ( -)	926 ( 10)
Male-male sexual contact/IDU	30 ( 8)	28 ( 8)	27 ( 8)	23 ( 7)	16 ( 6)	16 ( 7)	11 ( 4)	21 ( 9)	8 ( 7)	872 ( 10)
Hemophilia or coagulation disorder	<5 ( -)	<5 ( -)	<5 ( -)	<5 ( -)	<5 ( -)	<5 ( -)	<5 ( -)	<5 ( -)	<5 ( -)	22 (<1)
Heterosexual contact (3)	12 ( 3)	15 ( 5)	19 ( 6)	9 ( 3)	16 ( 6)	6 ( 3)	9 ( 4)	11 ( 5)	5 ( 4)	268 ( 3)
Transfusion recipient	<5 ( -)	<5 ( -)	<5 ( -)	<5 ( -)	<5 ( -)	<5 ( -)	<5 ( -)	<5 ( -)	<5 ( -)	43 (<1)
Mother with/at risk for HIV	<5 ( -)	<5 ( -)	<5 ( -)	<5 ( -)	<5 ( -)	<5 ( -)	<5 ( -)	<5 ( -)	<5 ( -)	6 (<1)
Other/Undetermined	75 ( 21)	72 ( 22)	61 ( 19)	74 ( 23)	48 ( 19)	63 ( 28)	75 ( 30)	47 ( 20)	31 ( 27)	1145 ( 13)
Male subtotal	355	331	325	322	248	229	248	230	114	9128
[% of annual cases]	[ 79]	[ 80]	[ 81]	[ 81]	[ 78]	[ 76]	[ 77]	[ 77]	[ 79]	[ 85]
<b>FEMALE</b>										
Injection drug user (IDU)	18 ( 19)	21 ( 25)	17 ( 22)	21 ( 27)	14 ( 20)	10 ( 14)	12 ( 16)	7 ( 10)	<5 ( -)	455 ( 28)
Hemophilia or coagulation disorder	<5 ( -)	<5 ( -)	<5 ( -)	<5 ( -)	<5 ( -)	<5 ( -)	<5 ( -)	<5 ( -)	<5 ( -)	<5 ( -)
Heterosexual contact (3)	44 ( 46)	33 ( 40)	27 ( 35)	21 ( 27)	30 ( 43)	22 ( 31)	30 ( 41)	19 ( 28)	14 ( 45)	686 ( 41)
Transfusion recipient	<5 ( -)	<5 ( -)	<5 ( -)	<5 ( -)	<5 ( -)	<5 ( -)	<5 ( -)	<5 ( -)	<5 ( -)	56 ( 3)
Mother with/at risk for HIV	<5 ( -)	<5 ( -)	<5 ( -)	<5 ( -)	<5 ( -)	<5 ( -)	<5 ( -)	<5 ( -)	<5 ( -)	<5 ( -)
Other/Undetermined	31 ( 32)	28 ( 34)	31 ( 40)	35 ( 45)	24 ( 35)	37 ( 51)	32 ( 43)	37 ( 55)	16 ( 52)	450 ( 27)
Female subtotal	96	83	78	78	69	72	74	67	31	1654
[% of annual cases]	[ 21]	[ 20]	[ 19]	[ 20]	[ 22]	[ 24]	[ 23]	[ 23]	[ 21]	[ 15]
Total	451	414	403	400	317	301	322	297	145	10782

1. Exposure categories are ordered hierarchically, such that persons with multiple exposure categories are included in the category listed first.
2. Data are provisional due to reporting delay.
3. Heterosexual contact indicates contact with a person who is HIV-infected or at increased risk for HIV.

TABLE 8. HISPANIC ADULT/ADOLESCENT CASES OF AIDS BY GENDER, EXPOSURE CATEGORY AND YEAR OF DIAGNOSIS, REPORTED BY DECEMBER 31, 2007, LOS ANGELES COUNTY

Adult/Adolescent Exposure Category (1)	Year of Diagnosis									Cumulative 1982-2007 No. (%)
	1999 No. (%)	2000 No. (%)	2001 No. (%)	2002 No. (%)	2003 No. (%)	2004 No. (%)	2005 (2) No. (%)	2006(2) No. (%)	2007(2) No. (%)	
<b>MALE</b>										
Male-male sexual contact	412 ( 61)	400 ( 61)	381 ( 61)	426 ( 63)	374 ( 62)	351 ( 62)	298 ( 62)	275 ( 63)	159 ( 64)	10314 ( 70)
Injection drug user (IDU)	34 ( 5)	37 ( 6)	32 ( 5)	33 ( 5)	25 ( 4)	27 ( 5)	16 ( 3)	16 ( 4)	5 ( 2)	821 ( 6)
Male-male sexual contact/IDU	37 ( 5)	37 ( 6)	34 ( 5)	27 ( 4)	35 ( 6)	19 ( 3)	18 ( 4)	26 ( 6)	13 ( 5)	860 ( 6)
Hemophilia or coagulation disorder	<5 ( -)	<5 ( -)	<5 ( -)	<5 ( -)	<5 ( -)	<5 ( -)	<5 ( -)	<5 ( -)	<5 ( -)	41 (<1)
Heterosexual contact (3)	27 ( 4)	35 ( 5)	39 ( 6)	42 ( 6)	36 ( 6)	15 ( 3)	17 ( 4)	6 ( 1)	<5 ( -)	435 ( 3)
Transfusion recipient	<5 ( -)	<5 ( -)	<5 ( -)	5 ( 1)	<5 ( -)	<5 ( -)	<5 ( -)	<5 ( -)	<5 ( -)	102 ( 1)
Mother with/at risk for HIV	<5 ( -)	<5 ( -)	<5 ( -)	<5 ( -)	<5 ( -)	<5 ( -)	<5 ( -)	<5 ( -)	<5 ( -)	7 (<1)
Other/Undetermined	163 ( 24)	140 ( 21)	136 ( 22)	137 ( 20)	125 ( 21)	154 ( 27)	132 ( 27)	111 ( 25)	68 ( 27)	2234 ( 15)
Male subtotal	673	653	625	671	599	567	483	438	249	14814
[% of annual cases]	[ 89]	[ 87]	[ 86]	[ 87]	[ 87]	[ 90]	[ 88]	[ 86]	[ 90]	[ 90]
<b>FEMALE</b>										
Injection drug user (IDU)	10 ( 13)	8 ( 8)	12 ( 11)	8 ( 8)	<5 ( -)	7 ( 11)	7 ( 11)	5 ( 7)	<5 ( -)	227 ( 14)
Hemophilia or coagulation disorder	<5 ( -)	<5 ( -)	<5 ( -)	<5 ( -)	<5 ( -)	<5 ( -)	<5 ( -)	<5 ( -)	<5 ( -)	<5 ( -)
Heterosexual contact (3)	42 ( 53)	52 ( 53)	48 ( 46)	55 ( 54)	41 ( 45)	32 ( 49)	31 ( 47)	24 ( 33)	17 ( 63)	845 ( 52)
Transfusion recipient	<5 ( -)	<5 ( -)	<5 ( -)	<5 ( -)	<5 ( -)	<5 ( -)	<5 ( -)	<5 ( -)	<5 ( -)	106 ( 6)
Mother with/at risk for HIV	<5 ( -)	<5 ( -)	<5 ( -)	<5 ( -)	<5 ( -)	<5 ( -)	<5 ( -)	<5 ( -)	<5 ( -)	5 (<1)
Other/Undetermined	26 ( 33)	38 ( 38)	42 ( 40)	36 ( 35)	45 ( 49)	25 ( 38)	28 ( 42)	41 ( 57)	9 ( 33)	452 ( 28)
Female subtotal	79	99	105	102	91	65	66	72	27	1637
[% of annual cases]	[ 11]	[ 13]	[ 14]	[ 13]	[ 13]	[ 10]	[ 12]	[ 14]	[ 10]	[ 10]
Total	752	752	730	773	690	632	549	510	276	16451

1. Exposure categories are ordered hierarchically, such that persons with multiple exposure categories are included in the category listed first.
2. Data are provisional due to reporting delay.
3. Heterosexual contact indicates contact with a person who is HIV-infected or at increased risk for HIV.

TABLE 9. CUMULATIVE PEDIATRIC CASES OF AIDS BY EXPOSURE CATEGORY AND RACE/ETHNICITY  
 REPORTED BY DECEMBER 31, 2007  
 LOS ANGELES COUNTY

Pediatric (<13 years) Exposure Category (1)	Race/Ethnicity				
	White No. (%)	Black No. (%)	Hispanic No. (%)	Other No. (%)	Total No. (%)
Hemophilia/coagulation disorder	3 ( 7)	0 ( 0)	3 ( 3)	1 ( 14)	7 ( 3)
Mother with/at risk for HIV	21 ( 48)	70 ( 81)	83 ( 73)	2 ( 29)	176 ( 70)
Transfusion recipient	20 ( 45)	14 ( 16)	25 ( 22)	4 ( 57)	63 ( 25)
Other/Undetermined	0 ( 0)	2 ( 2)	2 ( 2)	0 ( 0)	4 ( 2)
<b>Total</b>	<b>44</b>	<b>86</b>	<b>113</b>	<b>7</b>	<b>250</b>
[% of total]	[ 18]	[ 34]	[ 45]	[ 3]	[100]

TABLE 10. PEDIATRIC CASES OF AIDS BY RACE/ETHNICITY, EXPOSURE CATEGORY AND YEAR OF DIAGNOSIS  
 REPORTED BY DECEMBER 31, 2007  
 LOS ANGELES COUNTY

Pediatric (<13 years)	Year of Diagnosis					
	Before 2003 No. (%)	2003 No. (%)	2004 No. (%)	2005 (2) No. (%)	2006 (2) No. (%)	2007 (2) No. (%)
<b>RACE/ETHNICITY</b>						
White	42 ( 17)	1 (100)	0 ( 0)	1 ( 50)	0 ( -)	0 ( -)
Black	85 ( 35)	0 ( 0)	1 ( 50)	0 ( 0)	0 ( -)	0 ( -)
Hispanic	112 ( 46)	0 ( 0)	0 ( 0)	1 ( 50)	0 ( -)	0 ( -)
Other	6 ( 2)	0 ( 0)	1 ( 50)	0 ( 0)	0 ( -)	0 ( -)
<b>EXPOSURE CATEGORY (1)</b>						
Hemophilia/coagulation disorder	7 ( 3)	0 ( 0)	0 ( 0)	0 ( 0)	0 ( -)	0 ( -)
Mother with/at risk for HIV	171 ( 70)	1 (100)	2 (100)	2 (100)	0 ( -)	0 ( -)
Transfusion recipient	63 ( 26)	0 ( 0)	0 ( 0)	0 ( 0)	0 ( -)	0 ( -)
Other/Undetermined	4 ( 2)	0 ( 0)	0 ( 0)	0 ( 0)	0 ( -)	0 ( -)
<b>Total</b>	<b>245</b>	<b>1</b>	<b>2</b>	<b>2</b>	<b>0</b>	<b>0</b>
[% of total]	[ 98]	[ <1]	[ 1]	[ 1]	[ 0]	[ 0]

1. Exposure categories are ordered hierarchically. Except for the combination listed, persons with multiple exposure categories are included in the category listed first.
2. Data are provisional due to reporting delay.

TABLE 11. CUMULATIVE ADULT/ADOLESCENT AND PEDIATRIC CASES OF INJECTION DRUG-ASSOCIATED AIDS  
 BY GENDER, EXPOSURE CATEGORY AND RACE/ETHNICITY  
 REPORTED BY DECEMBER 31, 2007  
 LOS ANGELES COUNTY

Exposure Category (1)	Race/Ethnicity				
	White No. (%)	Black No. (%)	Hispanic No. (%)	Other No. (%)	Total (2) No. (%)
<b>ADULT/ADOLESCENT</b>					
<b>Male</b>					
Injection drug user (IDU)	768 ( 29)	926 ( 49)	821 ( 46)	27 ( 26)	2546 ( 39)
Male-male sexual contact/IDU	1851 ( 69)	872 ( 46)	860 ( 48)	73 ( 70)	3666 ( 57)
Sex with IDU	58 ( 2)	82 ( 4)	119 ( 7)	<5 ( -)	263 ( 4)
Mother was IDU	<5 ( -)	<5 ( -)	<5 ( -)	<5 ( -)	6 (<1)
Mother had sex with IDU	<5 ( -)	<5 ( -)	<5 ( -)	<5 ( -)	<5 ( -)
Adult male subtotal	2679	1882	1803	104	6483
[% of subtotal]	[ 41]	[ 29]	[ 28]	[ 2]	[100]
<b>Female</b>					
Injection drug user (IDU)	330 ( 76)	455 ( 76)	227 ( 63)	23 ( 70)	1041 ( 72)
Sex with IDU	103 ( 24)	144 ( 24)	134 ( 37)	10 ( 30)	391 ( 27)
Mother was IDU	<5 ( -)	<5 ( -)	<5 ( -)	<5 ( -)	<5 ( -)
Mother had sex with IDU	<5 ( -)	<5 ( -)	<5 ( -)	<5 ( -)	<5 ( -)
Adult female subtotal	434	600	363	33	1436
[% of subtotal]	[ 30]	[ 42]	[ 25]	[ 2]	[100]
Adult subtotal	3113	2482	2166	137	7919
[% of subtotal]	[ 39]	[ 31]	[ 27]	[ 2]	[100]
<b>PEDIATRIC (&lt;13 YEARS)</b>					
Mother was IDU	8 ( 62)	17 ( 68)	7 ( 33)	<5 ( -)	32 ( 53)
Mother had sex with IDU	5 ( 38)	8 ( 32)	14 ( 67)	<5 ( -)	28 ( 47)
Pediatric subtotal	13	25	21	<5	60
[% of subtotal]	[ 22]	[ 42]	[ 35]	[ -]	[100]
Total	3126	2507	2187	138	7979
[% of total]	[ 39]	[ 31]	[ 27]	[ 2]	[100]

1. Exposure categories are ordered hierarchically. Except for the combination listed, persons with multiple exposure categories are included in the category listed first.
2. Total includes persons who have multiple races/ethnicities or have missing information on race/ethnicity.

TABLE 12. CUMULATIVE ADULT/ADOLESCENT AIDS INDICATOR CONDITIONS AT TIME OF DIAGNOSIS (1) BY GENDER  
 REPORTED BY DECEMBER 31, 2007  
 LOS ANGELES COUNTY

Indicator Condition (2)	Gender		Total No. (%)
	Male No. (%)	Female No. (%)	
Candidiasis of bronchi, trachea, or lungs	486 ( 1)	52 ( 1)	538 ( 1)
Candidiasis of esophagus	2430 ( 5)	275 ( 6)	2705 ( 5)
Carcinoma, invasive cervical	- ( -)	24 ( 1)	24 (<1)
Coccidioidomycosis, disseminated or extrapulmonary	117 (<1)	9 (<1)	126 (<1)
Cryptococcosis, extrapulmonary	1737 ( 4)	95 ( 2)	1832 ( 3)
Cryptosporidiosis, chronic intestinal	873 ( 2)	34 ( 1)	907 ( 2)
Cytomegalovirus disease other than retinitis	1417 ( 3)	78 ( 2)	1495 ( 3)
Cytomegalovirus retinitis	937 ( 2)	52 ( 1)	989 ( 2)
HIV encephalopathy	1044 ( 2)	65 ( 1)	1109 ( 2)
Herpes simplex: chronic ulcers, pneumonitis or esophagitis	1407 ( 3)	140 ( 3)	1547 ( 3)
Histoplasmosis, disseminated or extrapulmonary	169 (<1)	12 (<1)	181 (<1)
Isosporiasis, chronic intestinal	160 (<1)	9 (<1)	169 (<1)
Kaposi's sarcoma	4769 ( 10)	33 ( 1)	4802 ( 9)
Lymphoma, Burkitt's	246 ( 1)	14 (<1)	260 (<1)
Lymphoma, immunoblastic	713 ( 1)	26 ( 1)	739 ( 1)
Lymphoma, primary in brain	161 (<1)	<5 ( -)	164 (<1)
Mycobacterium avium or M. kansasii, disseminated	1332 ( 3)	65 ( 1)	1397 ( 3)
M. tuberculosis, pulmonary	1149 ( 2)	143 ( 3)	1292 ( 2)
M. tuberculosis, disseminated or extrapulmonary	815 ( 2)	99 ( 2)	914 ( 2)
Mycobacterium, other or unidentified species	289 ( 1)	19 (<1)	308 ( 1)
Pneumocystis carinii pneumonia	12110 ( 25)	733 ( 17)	12843 ( 24)
Pneumonia, recurrent	232 (<1)	46 ( 1)	278 ( 1)
Progressive multifocal leukoencephalopathy	206 (<1)	7 (<1)	213 (<1)
Salmonella septicemia, recurrent	73 (<1)	5 (<1)	78 (<1)
Toxoplasmosis of the brain	1085 ( 2)	87 ( 2)	1172 ( 2)
Wasting syndrome	3087 ( 6)	231 ( 5)	3318 ( 6)
CD4 < 200ul	25925 ( 53)	2995 ( 68)	28920 ( 55)
<b>Total</b>	<b>48570</b>	<b>4378</b>	<b>52948</b>

1. The table provides only a minimum estimate of indicator conditions because date of diagnosis may be missing for some indicator conditions.
2. Persons may have more than one condition at time of AIDS diagnosis.

TABLE 13. ANNUAL CASES OF AIDS AND RATES PER 100,000 (1)  
 BY SERVICE PLANNING AREA/HEALTH DISTRICT OF RESIDENCE AND YEAR OF DIAGNOSIS  
 REPORTED BY DECEMBER 31, 2007  
 LOS ANGELES COUNTY

Service Planning Area/ Health District	Year of Diagnosis										Cumulative Total (3) No. (%)	
	2003		2004		2005 (2)		2006 (2)		2007 (2)			
	No.	(%) Rate	No.	(%) Rate	No.	(%) Rate	No.	(%) Rate	No.	(%) Rate		
Antelope Valley[1]	14	( 1) 4	18	( 1) 5	18	( 1) 5	15	( 1) 4	8	( 1) 2	505	( 1)
Antelope Valley	14	( 1) 4	18	( 1) 5	18	( 1) 5	15	( 1) 4	8	( 1) 2	505	( 1)
San Fernando[2]	220	( 14) 11	133	( 9) 6	143	( 11) 7	144	( 12) 7	60	( 9) 3	7362	( 14)
East Valley	74	( 5) 17	46	( 3) 10	47	( 4) 11	55	( 4) 12	25	( 4) 5	2864	( 5)
Glendale	17	( 1) 5	22	( 2) 6	15	( 1) 4	30	( 2) 8	5	( 1) 1	1162	( 2)
San Fernando	28	( 2) 6	17	( 1) 4	23	( 2) 5	18	( 1) 4	6	( 1) 1	672	( 1)
West Valley	101	( 6) 12	48	( 3) 6	58	( 5) 7	41	( 3) 5	24	( 4) 3	2664	( 5)
San Gabriel [3]	122	( 7) 7	121	( 9) 7	84	( 7) 5	82	( 7) 4	39	( 6) 2	3837	( 7)
Alhambra	20	( 1) 6	18	( 1) 5	13	( 1) 4	12	( 1) 3	6	( 1) 2	663	( 1)
El Monte	36	( 2) 8	37	( 3) 8	27	( 2) 6	23	( 2) 5	7	( 1) 1	870	( 2)
Foothill	14	( 1) 5	15	( 1) 5	11	( 1) 4	12	( 1) 4	7	( 1) 2	635	( 1)
Pasadena	17	( 1) 12	13	( 1) 9	5	( <1) 3	14	( 1) 9	6	( 1) 4	706	( 1)
Pomona	35	( 2) 6	38	( 3) 7	28	( 2) 5	21	( 2) 4	13	( 2) 2	963	( 2)
Metro[4]	543	( 33) 45	372	( 26) 30	353	( 28) 28	363	( 30) 29	186	( 29) 15	20097	( 38)
Central	181	( 11) 50	137	( 10) 37	132	( 10) 35	156	( 13) 42	78	( 12) 21	6037	( 11)
Hollywood-Wilshire	313	( 19) 59	195	( 14) 36	178	( 14) 33	166	( 14) 31	86	( 14) 16	11926	( 22)
Northeast	49	( 3) 15	40	( 3) 12	43	( 3) 13	41	( 3) 12	22	( 3) 6	2134	( 4)
West[5]	93	( 6) 15	60	( 4) 9	51	( 4) 8	55	( 4) 9	28	( 4) 4	2989	( 6)
West	93	( 6) 15	60	( 4) 9	51	( 4) 8	55	( 4) 9	28	( 4) 4	2989	( 6)
South[6]	188	( 12) 19	165	( 12) 16	177	( 14) 17	158	( 13) 15	74	( 12) 7	5232	( 10)
Compton	33	( 2) 12	31	( 2) 11	30	( 2) 10	23	( 2) 8	19	( 3) 6	896	( 2)
South	21	( 1) 12	29	( 2) 16	36	( 3) 20	26	( 2) 14	14	( 2) 7	855	( 2)
Southeast	36	( 2) 22	25	( 2) 15	36	( 3) 21	28	( 2) 16	8	( 1) 4	802	( 2)
Southwest	98	( 6) 26	80	( 6) 20	75	( 6) 19	81	( 7) 21	33	( 5) 9	2679	( 5)
East[7]	98	( 6) 7	97	( 7) 7	80	( 6) 6	66	( 5) 5	22	( 3) 2	3037	( 6)
Bellflower	19	( 1) 5	19	( 1) 5	15	( 1) 4	11	( 1) 3	5	( 1) 1	639	( 1)
East Los Angeles	20	( 1) 9	21	( 1) 9	20	( 2) 9	13	( 1) 6	<5	( -) -	676	( 1)
San Antonio	40	( 2) 9	34	( 2) 8	26	( 2) 6	24	( 2) 5	10	( 2) 2	1083	( 2)
Whittier	19	( 1) 6	23	( 2) 7	19	( 1) 6	18	( 1) 5	<5	( -) -	639	( 1)
South Bay[8]	298	( 18) 19	349	( 25) 22	324	( 25) 20	313	( 26) 19	201	( 32) 13	8581	( 16)
Harbor	19	( 1) 9	29	( 2) 14	21	( 2) 10	22	( 2) 10	13	( 2) 6	504	( 1)
Inglewood	41	( 3) 10	54	( 4) 13	47	( 4) 11	49	( 4) 11	25	( 4) 6	1574	( 3)
Long Beach	211	( 13) 43	237	( 17) 48	230	( 18) 47	221	( 18) 45	148	( 23) 30	5566	( 10)
Torrance	27	( 2) 6	29	( 2) 6	26	( 2) 6	21	( 2) 4	15	( 2) 3	937	( 2)
<b>Total (4)</b>	<b>1629</b>	<b>(100) 16</b>	<b>1405</b>	<b>(100) 14</b>	<b>1282</b>	<b>(100) 13</b>	<b>1224</b>	<b>(100) 12</b>	<b>633</b>	<b>(100) 6</b>	<b>53198</b>	<b>(100)</b>

1. Rates are based on population estimates from 2003-2006. Rates for 2007 are calculated using population estimates for 2006. Rates based on observations fewer than 20 may not be reliable (see Technical Notes, page 28).
2. Data are provisional due to reporting delay.
3. Cumulative total includes persons diagnosed since 1982.
4. Total includes persons with no information on Service Planning Area/Health District.

TABLE 14. ANNUAL CASES OF AIDS AND RATES PER 100,000 (1) BY CITY/AREA (2) OF RESIDENCE AND YEAR OF DIAGNOSIS  
TOP 35 CITIES (3) RANKED BY 2006 RATE, REPORTED BY DECEMBER 31, 2007  
LOS ANGELES COUNTY

City/Area	Year of Diagnosis					Cumulative 1982-2007 No.
	2002 No. (Rate)	2003 No. (Rate)	2004 No. (Rate)	2005 (4) No. (Rate)	2006 (4) No. (Rate)	
Wholesale	57 (101.7)	56 (98.7)	30 (52.2)	50 (86.7)	59 (99.5)	1289
West Hollywood	78 (210.6)	80 (213.6)	38 (100.1)	31 (82.0)	33 (88.2)	3019
Downtown	10 (40.6)	17 (65.1)	17 (61.2)	7 (24.5)	11 (48.3)	387
Hollywood	166 (70.5)	138 (58.2)	100 (42.0)	97 (40.4)	98 (39.6)	6293
Long Beach	228 (47.7)	200 (41.2)	224 (45.5)	212 (43.0)	181 (36.7)	5367
Los Feliz	37 (85.4)	20 (45.4)	13 (29.0)	15 (33.1)	14 (31.8)	1226
Miracle Mile S	17 (33.0)	17 (32.1)	10 (18.2)	11 (19.6)	14 (28.4)	630
Crenshaw	29 (40.1)	21 (28.8)	18 (23.6)	14 (18.3)	17 (23.4)	654
Watts	10 (27.5)	<5 ( - )	11 (29.1)	9 (23.6)	9 (22.8)	192
Vermont Square	13 (17.7)	12 (16.1)	11 (14.4)	21 (27.5)	17 (22.2)	470
Slvlke-chinatl	52 (61.5)	49 (56.1)	36 (39.8)	28 (30.6)	18 (21.0)	1820
W Adms-expo Pk	23 (17.4)	30 (22.2)	22 (15.8)	21 (14.7)	27 (20.0)	841
Westlake	31 (24.8)	32 (25.1)	27 (20.7)	18 (13.9)	27 (20.0)	1024
San Pedro	12 (15.8)	14 (18.2)	20 (25.8)	15 (19.1)	15 (19.5)	268
Lawndale	<5 ( - )	<5 ( - )	<5 ( - )	<5 ( - )	6 (18.0)	116
S Vermont	27 (24.9)	21 (19.1)	19 (16.7)	25 (21.9)	19 (17.2)	629
N Hollywood	41 (31.6)	27 (20.6)	24 (18.1)	24 (17.9)	23 (17.2)	1323
La Puente	<5 ( - )	5 (12.2)	<5 ( - )	<5 ( - )	7 (16.9)	98
Miracle Mile N	15 (33.9)	17 (37.8)	9 (19.8)	9 (19.2)	7 (16.3)	665
Adams-la Brea	14 (25.0)	14 (24.7)	17 (29.1)	7 (12.1)	9 (15.5)	439
Boyle Heights	26 (28.5)	13 (14.1)	17 (18.3)	19 (20.7)	15 (14.9)	482
Green Meadows	14 (24.0)	7 (11.8)	10 (16.4)	12 (19.5)	9 (14.6)	315
Barnes City	<5 ( - )	6 (16.6)	<5 ( - )	<5 ( - )	5 (14.4)	115
Beverly Hills	<5 ( - )	6 (16.9)	6 (16.7)	5 (13.9)	5 (14.0)	235
Inglewood	34 (29.4)	10 (8.6)	20 (17.0)	11 (9.3)	16 (13.5)	578
Eagle Rk-glasl	13 (17.9)	18 (24.6)	8 (10.8)	<5 ( - )	10 (13.0)	619
Westmont-w Aths	14 (37.6)	5 (13.4)	8 (20.7)	10 (26.5)	5 (12.6)	185
Mar Vista	9 (13.8)	6 (9.2)	7 (10.6)	5 (7.6)	8 (11.9)	239
Studio City	22 (42.8)	12 (23.3)	6 (11.8)	<5 ( - )	6 (11.6)	767
Wilshir Ctr N	30 (38.0)	18 (22.5)	14 (17.1)	17 (20.9)	10 (11.6)	754
Gardena	5 (8.4)	<5 ( - )	8 (13.1)	6 (9.8)	7 (11.3)	173
Burbank	14 (13.5)	6 (5.7)	7 (6.6)	<5 ( - )	12 (11.2)	434
Sun Valley	10 (13.0)	11 (14.2)	7 (9.0)	<5 ( - )	9 (10.8)	265
Centrl Av-s Pk	21 (17.5)	22 (18.1)	15 (12.1)	27 (21.8)	14 (10.7)	545
Westchester	<5 ( - )	<5 ( - )	6 (11.4)	<5 ( - )	5 (10.4)	152

1. Rates are based on population estimates for 2002-2006. Rates based on observations fewer than 20 may not be reliable (see Technical Notes, page 28).
2. The city of Los Angeles is broken down into "areas" or geographic units with more than 15,000 residents. Cities and areas are approximately defined by aggregating the associated census tracts based on the location of their centroid.
3. Includes cities and areas that had more than 15,000 residents and at least 5 persons diagnosed with AIDS in 2006.
4. Data are provisional due to reporting delay.

TABLE 15. REPORTED NUMBER AND RATES PER 100,000 (1) FOR PERSONS DIAGNOSED WITH AIDS AND PERSONS LIVING WITH AIDS AS OF DECEMBER 31, 2007  
BY GENDER, AGE, RACE/ETHNICITY AND EXPOSURE CATEGORY, LOS ANGELES COUNTY

	Male						Female						Total					
	Year 2006(2)		Living(2)		Cumulative(3)		Year 2006(2)		Living(2)		Cumulative(3)		Year 2006(2)		Living(2)		Cumulative(3)	
	No.	(%) Rate	No.	(%) Rate	No.	(%)	No.	(%) Rate	No.	(%) Rate	No.	(%)	No.	(%) Rate	No.	(%) Rate	No.	(%)
<b>AGE GROUP (4)</b>																		
<13	<5 ( -)	-	13 (<1)	1	138 (<1)	<5 ( -)	-	7 (<1)	1	112 ( 2)	<5 ( -)	-	20 (<1)	1	250 (<1)			
13-19	12 ( 1)	2	33 (<1)	6	217 (<1)	<5 ( -)	-	24 ( 1)	5	67 ( 1)	14 ( 1)	1	57 (<1)	5	284 ( 1)			
20-29	150 ( 14)	20	625 ( 3)	85	7751 ( 16)	19 ( 12)	3	126 ( 5)	18	922 ( 21)	169 ( 14)	12	751 ( 3)	52	8673 ( 16)			
30-39	343 ( 32)	42	3621 ( 18)	446	21486 ( 44)	50 ( 30)	6	574 ( 23)	73	1642 ( 37)	393 ( 32)	25	4195 ( 19)	263	23128 ( 43)			
40-49	376 ( 36)	49	8958 ( 45)	1158	13081 ( 27)	58 ( 35)	8	991 ( 40)	128	1065 ( 24)	434 ( 35)	28	9949 ( 44)	644	14146 ( 27)			
50-59	144 ( 14)	26	5071 ( 25)	898	4562 ( 9)	28 ( 17)	5	505 ( 21)	83	458 ( 10)	172 ( 14)	15	5576 ( 25)	475	5020 ( 9)			
60+	34 ( 3)	6	1676 ( 8)	272	1473 ( 3)	8 ( 5)	1	231 ( 9)	28	224 ( 5)	42 ( 3)	3	1907 ( 8)	133	1697 ( 3)			
<b>RACE/ETHNICITY (5)</b>																		
White	342 ( 32)	22	7571 ( 38)	494	23232 ( 48)	19 ( 12)	1	432 ( 18)	28	964 ( 21)	361 ( 29)	12	8003 ( 36)	259	24196 ( 45)			
Black	230 ( 22)	53	3796 ( 19)	876	9179 ( 19)	67 ( 41)	13	885 ( 36)	177	1689 ( 38)	297 ( 24)	32	4681 ( 21)	501	10868 ( 20)			
Hispanic	438 ( 41)	18	7865 ( 39)	320	14872 ( 31)	72 ( 44)	3	1057 ( 43)	44	1692 ( 38)	510 ( 42)	10	8922 ( 40)	183	16564 ( 31)			
Asian	42 ( 4)	6	615 ( 3)	95	1132 ( 2)	<5 ( -)	-	58 ( 2)	8	107 ( 2)	46 ( 4)	3	673 ( 3)	49	1239 ( 2)			
AI/AN	<5 ( -)	-	84 (<1)	557	191 (<1)	<5 ( -)	-	21 ( 1)	132	29 ( 1)	5 (<1)	16	105 (<1)	338	220 (<1)			
<b>EXPOSURE CATEGORY (6)</b>																		
MSM	711 ( 67)		14538 ( 73)		36654 ( 75)	- ( -)		- ( -)		- ( -)	711 ( 58)		14538 ( 65)		36654 ( 69)			
IDU	36 ( 3)		863 ( 4)		2546 ( 5)	22 ( 13)		472 ( 19)		1041 ( 23)	58 ( 5)		1335 ( 6)		3587 ( 7)			
MSM/IDU	77 ( 7)		1482 ( 7)		3666 ( 8)	- ( -)		- ( -)		- ( -)	77 ( 6)		1482 ( 7)		3666 ( 7)			
Hemophi/Transfusion	<5 ( -)		113 ( 1)		530 ( 1)	<5 ( -)		78 ( 3)		293 ( 7)	7 ( 1)		191 ( 1)		823 ( 2)			
Heterosexual contact	24 ( 2)		518 ( 3)		880 ( 2)	52 ( 32)		1190 ( 48)		1967 ( 44)	76 ( 6)		1708 ( 8)		2847 ( 5)			
Mother w/at HIV risk	5 (<1)		52 (<1)		102 (<1)	<5 ( -)		39 ( 2)		101 ( 2)	7 ( 1)		91 (<1)		203 (<1)			
Other/Undetermined	203 ( 19)		2431 ( 12)		4330 ( 9)	85 ( 52)		679 ( 28)		1088 ( 24)	288 ( 24)		3110 ( 14)		5418 ( 10)			
<b>Total (7)</b>	<b>1059 ( 87)</b>	<b>21</b>	<b>19997 ( 89)</b>	<b>393</b>	<b>48708 ( 92)</b>	<b>165 ( 13)</b>	<b>3</b>	<b>2458 ( 11)</b>	<b>47</b>	<b>4490 ( 8)</b>	<b>1224 (100)</b>	<b>12</b>	<b>22455 (100)</b>	<b>218</b>	<b>53198 (100)</b>			

1. Rates based on observations fewer than 20 may not be reliable. Rates are based on year 2006 population estimates (see Technical Notes, page 28).
2. Data are provisional due to reporting delay. 3. Include persons reported as of December 31, 2007.
4. Age distributions for year 2006 and cumulative cases are based on age at the time of AIDS diagnosis while the age distribution for persons living with AIDS is based on age as of December 31, 2007.
5. Does not include persons who have multiple races/ethnicities or have missing information on race/ethnicity.
6. Rate for exposure category is not available, because denominator can only be estimated. 7. Percent of total cases that are male and female is shown in this row.

TABLE 16. CUMULATIVE NUMBER OF PERSONS DIAGNOSED WITH AIDS BY GENDER, AGE, RACE/ETHNICITY AND EXPOSURE CATEGORY FOR EACH SERVICE PLANNING AREA (SPA)  
IN LOS ANGELES COUNTY, 1982-2007

Service Planning Area	Antelope Valley No. (%)	San Fernando No. (%)	San Gabriel No. (%)	Metro No. (%)	West No. (%)	South No. (%)	East No. (%)	South Bay/LB No. (%)	Total (1) No. (%)
<b>GENDER</b>									
Male	428 ( 85)	6826 ( 93)	3368 ( 88)	19145 ( 95)	2810 ( 94)	4327 ( 83)	2676 ( 88)	7721 ( 90)	48708 ( 92)
Female	77 ( 15)	536 ( 7)	469 ( 12)	952 ( 5)	179 ( 6)	905 ( 17)	361 ( 12)	860 ( 10)	4490 ( 8)
<b>AGE GROUP (2)</b>									
<13	6 ( 1)	33 (<1)	31 ( 1)	51 (<1)	10 (<1)	42 ( 1)	28 ( 1)	38 (<1)	250 (<1)
13-19	5 ( 1)	29 (<1)	30 ( 1)	70 (<1)	7 (<1)	56 ( 1)	26 ( 1)	51 ( 1)	284 ( 1)
20-29	87 ( 17)	1068 ( 15)	685 ( 18)	3083 ( 15)	410 ( 14)	1047 ( 20)	610 ( 20)	1411 ( 16)	8673 ( 16)
30-39	203 ( 40)	3126 ( 42)	1614 ( 42)	9029 ( 45)	1350 ( 45)	2070 ( 40)	1275 ( 42)	3781 ( 44)	23128 ( 43)
40-49	135 ( 27)	2046 ( 28)	941 ( 25)	5497 ( 27)	801 ( 27)	1326 ( 25)	707 ( 23)	2289 ( 27)	14146 ( 27)
50-59	46 ( 9)	799 ( 11)	362 ( 9)	1835 ( 9)	287 ( 10)	495 ( 9)	271 ( 9)	778 ( 9)	5020 ( 9)
60+	23 ( 5)	261 ( 4)	174 ( 5)	532 ( 3)	124 ( 4)	196 ( 4)	120 ( 4)	233 ( 3)	1697 ( 3)
<b>RACE/ETHNICITY (3)</b>									
White	258 ( 51)	4485 ( 61)	1341 ( 35)	10421 ( 52)	1998 ( 67)	259 ( 5)	646 ( 21)	4150 ( 48)	24196 ( 45)
Black	124 ( 25)	669 ( 9)	639 ( 17)	3064 ( 15)	403 ( 13)	3339 ( 64)	175 ( 6)	2066 ( 24)	10868 ( 20)
Hispanic	115 ( 23)	1990 ( 27)	1639 ( 43)	6019 ( 30)	501 ( 17)	1596 ( 31)	2130 ( 70)	2080 ( 24)	16564 ( 31)
Asian	5 ( 1)	170 ( 2)	190 ( 5)	455 ( 2)	66 ( 2)	23 (<1)	65 ( 2)	241 ( 3)	1239 ( 2)
AI/AN	<5 ( -)	30 (<1)	15 (<1)	91 (<1)	14 (<1)	12 (<1)	17 ( 1)	33 (<1)	220 (<1)
<b>EXPOSURE CATEGORY</b>									
MSM	244 ( 48)	5214 ( 71)	2331 ( 61)	15392 ( 77)	2291 ( 77)	2649 ( 51)	1797 ( 59)	5849 ( 68)	36654 ( 69)
IDU	76 ( 15)	449 ( 6)	348 ( 9)	855 ( 4)	140 ( 5)	568 ( 11)	249 ( 8)	731 ( 9)	3587 ( 7)
MSM/IDU	41 ( 8)	415 ( 6)	226 ( 6)	1495 ( 7)	159 ( 5)	334 ( 6)	165 ( 5)	683 ( 8)	3666 ( 7)
Hemophi/Transfusion	19 ( 4)	149 ( 2)	100 ( 3)	143 ( 1)	61 ( 2)	104 ( 2)	94 ( 3)	132 ( 2)	823 ( 2)
Heterosexual contact	51 ( 10)	354 ( 5)	291 ( 8)	558 ( 3)	113 ( 4)	545 ( 10)	240 ( 8)	617 ( 7)	2847 ( 5)
Mother w/at HIV risk	<5 ( -)	21 (<1)	25 ( 1)	43 (<1)	9 (<1)	39 ( 1)	20 ( 1)	31 (<1)	203 (<1)
Other/Undetermined	71 ( 14)	760 ( 10)	516 ( 13)	1611 ( 8)	216 ( 7)	993 ( 19)	472 ( 16)	538 ( 6)	5418 ( 10)
<b>Total</b>	<b>505 (100)</b>	<b>7362 (100)</b>	<b>3837 (100)</b>	<b>20097 (100)</b>	<b>2989 (100)</b>	<b>5232 (100)</b>	<b>3037 (100)</b>	<b>8581 (100)</b>	<b>53198 (100)</b>

1. Total includes persons with no information on SPA.
2. Age at time of diagnosis.
3. Does not include cases who have multiple races/ethnicities or have missing information on race/ethnicity.

TABLE 17. NUMBER OF PERSONS DIAGNOSED WITH AIDS (1) AND RATE PER 100,000 (1, 2) IN YEAR 2006  
BY GENDER, AGE, RACE/ETHNICITY AND EXPOSURE CATEGORY FOR EACH SERVICE PLANNING AREA (SPA) IN LOS ANGELES COUNTY

Service Planning Area	Antelope Valley No. (%) Rate	San Fernando No. (%) Rate	San Gabriel No. (%) Rate	Metro No. (%) Rate	West No. (%) Rate	South No. (%) Rate	East No. (%) Rate	South Bay/LB No. (%) Rate	Total (3) No. (%) Rate
<b>GENDER</b>									
Male	13 ( 87) 7	127 ( 88) 12	67 ( 82) 7	336 ( 93) 52	51 ( 93) 17	122 ( 77) 24	58 ( 88) 9	260 ( 83) 33	1059 ( 87) 21
Female	<5 ( -) -	17 ( 12) 2	15 ( 18) 2	27 ( 7) 4	<5 ( -) -	36 ( 23) 7	8 ( 12) 1	53 ( 17) 6	165 ( 13) 3
<b>AGE GROUP</b>									
<30	<5 ( -) -	20 ( 14) 2	16 ( 20) 2	43 ( 12) 8	9 ( 16) 4	38 ( 24) 7	<5 ( -) -	45 ( 14) 6	183 ( 15) 4
30-39	<5 ( -) -	45 ( 31) 14	33 ( 40) 12	130 ( 36) 53	17 ( 31) 14	42 ( 27) 28	22 ( 33) 11	94 ( 30) 38	393 ( 32) 25
40-49	7 ( 47) 12	49 ( 34) 14	21 ( 26) 8	125 ( 34) 64	19 ( 35) 18	52 ( 33) 40	30 ( 45) 16	120 ( 38) 48	434 ( 35) 28
50+	<5 ( -) -	30 ( 21) 5	12 ( 15) 2	65 ( 18) 22	10 ( 18) 5	26 ( 16) 13	10 ( 15) 3	54 ( 17) 13	214 ( 17) 8
<b>RACE/ETHNICITY (4)</b>									
White	9 ( 60) 5	54 ( 38) 5	14 ( 17) 3	133 ( 37) 51	25 ( 45) 6	8 ( 5) 35	7 ( 11) 3	101 ( 32) 20	361 ( 29) 12
Black	<5 ( -) -	21 ( 15) 28	8 ( 10) 9	72 ( 20) 103	12 ( 22) 29	83 ( 53) 25	7 ( 11) 20	89 ( 28) 36	297 ( 24) 32
Hispanic	<5 ( -) -	59 ( 41) 7	44 ( 54) 5	150 ( 41) 21	16 ( 29) 14	65 ( 41) 10	51 ( 77) 5	107 ( 34) 18	510 ( 42) 10
Other (5)	<5 ( -) -	9 ( 6) 4	15 ( 18) 3	8 ( 2) 4	<5 ( -) -	<5 ( -) -	<5 ( -) -	14 ( 4) 6	51 ( 4) 4
<b>EXPOSURE CATEGORY (6)</b>									
MSM	9 ( 60)	78 ( 54)	37 ( 45)	250 ( 69)	42 ( 76)	59 ( 37)	33 ( 50)	190 ( 61)	711 ( 58)
IDU	<5 ( -)	<5 ( -)	10 ( 12)	7 ( 2)	<5 ( -)	5 ( 3)	6 ( 9)	22 ( 7)	58 ( 5)
MSM/IDU	<5 ( -)	<5 ( -)	7 ( 9)	22 ( 6)	<5 ( -)	7 ( 4)	<5 ( -)	28 ( 9)	77 ( 6)
Hemophi/Transfusion	<5 ( -)	<5 ( -)	<5 ( -)	<5 ( -)	<5 ( -)	<5 ( -)	<5 ( -)	<5 ( -)	7 ( 1)
Heterosexual contact	<5 ( -)	6 ( 4)	6 ( 7)	7 ( 2)	<5 ( -)	12 ( 8)	<5 ( -)	39 ( 12)	76 ( 6)
Mother w/at HIV risk	<5 ( -)	<5 ( -)	<5 ( -)	<5 ( -)	<5 ( -)	<5 ( -)	<5 ( -)	<5 ( -)	7 ( 1)
Other/Undetermined	<5 ( -)	51 ( 35)	22 ( 27)	74 ( 20)	6 ( 11)	70 ( 44)	22 ( 33)	33 ( 11)	288 ( 24)
<b>Total</b>	<b>15 (100) 4</b>	<b>144 (100) 7</b>	<b>82 (100) 4</b>	<b>363 (100) 29</b>	<b>55 (100) 9</b>	<b>158 (100) 15</b>	<b>66 (100) 5</b>	<b>313 (100) 19</b>	<b>1224 (100) 12</b>

1. Data are provisional due to reporting delay.
2. Rates based on observations fewer than 20 may not be reliable(see Technical Notes, page 28).
3. Total includes persons with no information on SPA.
4. Does not include persons who have multiple races/ethnicities or have missing information on race/ethnicity.
5. Other includes Asian, Pacific Islander, American Indian and Alaskan Native.
6. Rate for exposure category is not available, because denominator can only be estimated.

TABLE 18. PERSONS LIVING WITH AIDS AND RATE PER 100,000 (1) AT THE END OF CALENDAR YEAR, BY GENDER, AGE, RACE/ETHNICITY AND EXPOSURE CATEGORY REPORTED BY DECEMBER 31, 2007, LOS ANGELES COUNTY

Calendar Year	2000			2001			2002			2003			2004			2005 (2)			2006 (2)			2007 (2)		
	No.	(%)	Rate	No.	(%)	Rate	No.	(%)	Rate	No.	(%)	Rate	No.	(%)	Rate	No.	(%)	Rate	No.	(%)	Rate	No.	(%)	Rate
<b>GENDER</b>																								
Male	14853	(90)	314	15652	(89)	325	16710	(89)	341	17594	(89)	355	18254	(89)	363	18887	(89)	373	19632	(89)	386	19997	(89)	393
Female	1703	(10)	35	1852	(11)	38	1993	(11)	40	2102	(11)	41	2195	(11)	43	2298	(11)	44	2412	(11)	46	2458	(11)	47
<b>AGE GROUP (3)</b>																								
<13	48	(<1)	2	43	(<1)	2	45	(<1)	2	42	(<1)	2	40	(<1)	2	36	(<1)	2	28	(<1)	1	20	(<1)	1
13-19	63	(<1)	6	71	(<1)	7	63	(<1)	6	66	(<1)	6	66	(<1)	6	56	(<1)	5	64	(<1)	6	57	(<1)	5
20-29	896	( 5)	61	867	( 5)	60	859	( 5)	60	862	( 4)	61	808	( 4)	57	831	( 4)	58	821	( 4)	57	751	( 3)	52
30-39	6302	(38)	397	6160	(35)	380	6060	(32)	370	5853	(30)	358	5483	(27)	336	5059	(24)	312	4685	(21)	293	4195	(19)	263
40-49	6253	(38)	461	6901	(39)	491	7646	(41)	527	8326	(42)	560	8891	(43)	583	9381	(44)	611	9777	(44)	633	9949	(44)	644
50-59	2334	(14)	253	2699	(15)	278	3114	(17)	305	3488	(18)	328	3934	(19)	353	4443	(21)	390	5061	(23)	431	5576	(25)	475
60+	660	( 4)	52	763	( 4)	60	916	( 5)	70	1059	( 5)	78	1227	( 6)	87	1379	( 7)	97	1608	( 7)	112	1907	( 8)	133
<b>RACE/ETHNICITY (4)</b>																								
White	6442	(39)	208	6634	(38)	216	7010	(37)	227	7342	(37)	237	7518	(37)	243	7673	(36)	247	7895	(36)	255	8003	(36)	259
Black	3525	(21)	373	3712	(21)	398	3939	(21)	421	4077	(21)	437	4204	(21)	427	4387	(21)	458	4600	(21)	492	4681	(21)	501
Hispanic	6052	(37)	141	6574	(38)	147	7113	(38)	155	7589	(39)	162	7993	(39)	170	8345	(39)	174	8725	(40)	179	8922	(40)	183
Asian	405	( 2)	33	439	( 3)	36	487	( 3)	39	530	( 3)	41	570	( 3)	42	614	( 3)	46	652	( 3)	48	673	( 3)	49
AI/AN	81	(<1)	290	88	( 1)	286	94	( 1)	305	98	(<1)	322	100	(<1)	320	99	(<1)	321	102	(<1)	329	105	(<1)	338
<b>EXPOSURE CATEGORY (5)</b>																								
MSM	10981	(66)		11511	(66)		12241	(65)		12884	(65)		13344	(65)		13787	(65)		14293	(65)		14538	(65)	
IDU	1189	( 7)		1226	( 7)		1277	( 7)		1285	( 7)		1296	( 6)		1318	( 6)		1339	( 6)		1335	( 6)	
MSM/IDU	1201	( 7)		1257	( 7)		1336	( 7)		1381	( 7)		1399	( 7)		1406	( 7)		1456	( 7)		1482	( 7)	
Hemophi/Transfusion	182	( 1)		191	( 1)		193	( 1)		191	( 1)		192	( 1)		192	( 1)		190	( 1)		191	( 1)	
Heterosexual contact	1202	( 7)		1312	( 7)		1410	( 8)		1521	( 8)		1562	( 8)		1621	( 8)		1678	( 8)		1708	( 8)	
Mother w/at HIV risk	67	(<1)		72	(<1)		76	(<1)		81	(<1)		83	(<1)		85	(<1)		90	(<1)		91	(<1)	
Other/Undetermined	1734	(10)		1935	(11)		2170	(12)		2353	(12)		2573	(13)		2776	(13)		2998	(14)		3110	(14)	
<b>Total</b>	<b>16556</b>	<b>(100)</b>	<b>173</b>	<b>17504</b>	<b>(100)</b>	<b>180</b>	<b>18703</b>	<b>(100)</b>	<b>189</b>	<b>19696</b>	<b>(100)</b>	<b>196</b>	<b>20449</b>	<b>(100)</b>	<b>201</b>	<b>21185</b>	<b>(100)</b>	<b>207</b>	<b>22044</b>	<b>(100)</b>	<b>214</b>	<b>22455</b>	<b>(100)</b>	<b>218</b>

1. Rates that are based on observations fewer than 20 may not be reliable(see Technical Notes, page 28).
2. Data are provisional due to reporting delay. Rates for 2007 are calculated using population estimates for 2006.
3. Age as of the end of year.
4. Does not include persons of multiple races/ethnicities or unknown race/ethnicity.
5. Rate for exposure category is not available, because denominator can only be estimated.

TABLE 19. PERSONS LIVING WITH AIDS AND RATE PER 100,000 (1) AS OF DECEMBER 31, 2007  
 BY SERVICE PLANNING AREA, GENDER, AGE, RACE/ETHNICITY AND EXPOSURE CATEGORY, LOS ANGELES COUNTY

Service Planning Area	Antelope Valley No. (%) Rate	San Fernando No. (%) Rate	San Gabriel No. (%) Rate	Metro No. (%) Rate	West No. (%) Rate	South No. (%) Rate	East No. (%) Rate	South Bay/LB No. (%) Rate	Total (2) No. (%) Rate
<b>GENDER</b>									
Male	201 (83) 115	2555 (90) 240	1269 (84) 139	7539 (94) 1166	1077 (92) 349	1769 (79) 348	1191 (86) 175	3656 (87) 464	19997 (89) 393
Female	40 (17) 23	292 (10) 27	240 (16) 25	520 (6) 85	91 (8) 28	461 (21) 86	197 (14) 28	530 (13) 65	2458 (11) 47
<b>AGE GROUP</b>									
<13	<5 ( - ) -	<5 ( - ) -	<5 ( - ) -	<5 ( - ) -	<5 ( - ) -	<5 ( - ) -	<5 ( - ) -	6 (<1) 2	20 (<1) 1
13-19	<5 ( - ) -	<5 ( - ) -	<5 ( - ) -	14 (<1) 12	<5 ( - ) -	13 ( 1) 10	7 ( 1) 4	8 (<1) 5	57 (<1) 5
20-29	8 ( 3) 15	90 ( 3) 32	60 ( 4) 22	179 ( 2) 105	29 ( 2) 39	116 ( 5) 69	63 ( 5) 30	183 ( 4) 88	751 ( 3) 52
30-39	41 (17) 105	478 (17) 148	322 (21) 121	1410 (17) 574	169 (14) 139	477 (21) 317	290 (21) 141	860 (21) 351	4195 (19) 263
40-49	108 (45) 193	1260 (44) 364	643 (43) 233	3649 (45) 1859	524 (45) 487	933 (42) 721	619 (45) 335	1851 (44) 741	9949 (44) 644
50-59	56 (23) 138	743 (26) 278	339 (22) 148	2117 (26) 1580	329 (28) 381	507 (23) 574	278 (20) 198	987 (24) 525	5576 (25) 475
60+	27 (11) 68	271 (10) 87	138 ( 9) 49	687 ( 9) 409	114 (10) 99	180 ( 8) 172	130 ( 9) 72	291 ( 7) 127	1907 ( 8) 133
<b>RACE/ETHNICITY (3)</b>									
White	97 (40) 58	1308 (46) 129	345 (23) 73	3311 (41) 1269	684 (59) 170	84 ( 4) 367	194 (14) 78	1688 (40) 332	8003 (36) 259
Black	71 (29) 154	320 (11) 432	239 (16) 282	1340 (17) 1909	172 (15) 418	1175 (53) 348	95 ( 7) 268	1068 (26) 436	4681 (21) 501
Hispanic	70 (29) 59	1092 (38) 131	795 (53) 93	3116 (39) 436	263 (23) 237	954 (43) 144	1050 (76) 108	1270 (30) 210	8922 (40) 183
Asian	<5 ( - ) -	99 ( 3) 44	113 ( 7) 25	219 ( 3) 104	38 ( 3) 47	7 (<1) 41	38 ( 3) 32	140 ( 3) 58	673 ( 3) 49
AI/AN	<5 ( - ) -	17 ( 1) 243	9 ( 1) 185	39 (<1) 975	7 ( 1) 469	8 (<1) 476	7 ( 1) 178	14 (<1) 260	105 (<1) 338
<b>EXPOSURE CATEGORY (4)</b>									
MSM	117 (49)	1824 (64)	843 (56)	5782 (72)	840 (72)	1057 (47)	811 (58)	2786 (67)	14538 (65)
IDU	30 (12)	162 ( 6)	124 ( 8)	298 ( 4)	58 ( 5)	179 ( 8)	87 ( 6)	312 ( 7)	1335 ( 6)
MSM/IDU	24 (10)	168 ( 6)	78 ( 5)	574 ( 7)	65 ( 6)	114 ( 5)	72 ( 5)	327 ( 8)	1482 ( 7)
Hemophi/Transfusion	<5 ( - ) -	32 ( 1)	21 ( 1)	37 (<1)	14 ( 1)	25 ( 1)	18 ( 1)	31 ( 1)	191 ( 1)
Heterosexual contact	28 (12)	210 ( 7)	165 (11)	337 ( 4)	64 ( 5)	303 (14)	143 (10)	416 (10)	1708 ( 8)
Mother w/at HIV risk	1 ( 0)	6 (<1)	8 ( 1)	21 (<1)	<5 ( - ) -	21 ( 1)	10 ( 1)	14 (<1)	91 (<1)
Other/Undetermined	38 (16)	445 (16)	270 (18)	1010 (13)	123 (11)	531 (24)	247 (18)	300 ( 7)	3110 (14)
<b>Total</b>	<b>241 (100) 69</b>	<b>2847 (100) 133</b>	<b>1509 (100) 81</b>	<b>8059 (100) 640</b>	<b>1168 (100) 184</b>	<b>2230 (100) 214</b>	<b>1388 (100) 101</b>	<b>4186 (100) 261</b>	<b>22455 (100) 218</b>

1. Rates that are based on observations few than 20 may not be reliable. Rates are based on year 2006 population estimates (see Technical Notes, page 28).
2. Total includes persons with no information on SPA.
3. Does not include cases who have multiple races/ethnicities or have missing information on race/ethnicity.
4. Rate for exposure category is not available, because denominator can only be estimated.

TABLE 20. ANNUAL DEATHS AMONG AIDS CASES BY AGE GROUP, RACE/ETHNICITY, GENDER EXPOSURE CATEGORY AND SERVICE PLANNING AREA REPORTED BY DECEMBER 31, 2007  
LOS ANGELES COUNTY

	Year of Death										Cumulative 1982-2007	
	2001		2002		2003		2004 (1)		2005(1)			
	No.	%	No.	%	No.	%	No.	%	No.	%	No.	%
<b>AGE AT DEATH</b>												
<13	<5	( - )	<5	( - )	<5	( - )	<5	( - )	<5	( - )	155	( 1 )
13- 19	<5	( - )	<5	( - )	<5	( - )	<5	( - )	<5	( - )	47	( <1 )
20- 29	33	( 4 )	25	( 4 )	23	( 4 )	20	( 3 )	12	( 2 )	2953	( 10 )
30- 39	203	( 27 )	180	( 28 )	145	( 23 )	154	( 24 )	92	( 17 )	12155	( 40 )
40- 49	285	( 38 )	240	( 38 )	255	( 40 )	249	( 38 )	263	( 48 )	9606	( 31 )
50- 59	147	( 20 )	139	( 22 )	143	( 22 )	147	( 23 )	117	( 21 )	4136	( 13 )
60+	75	( 10 )	48	( 8 )	67	( 11 )	81	( 12 )	61	( 11 )	1691	( 6 )
<b>RACE/ETHNICITY</b>												
White	297	( 40 )	203	( 32 )	221	( 35 )	226	( 35 )	197	( 36 )	16193	( 53 )
Black	217	( 29 )	175	( 28 )	179	( 28 )	175	( 27 )	139	( 25 )	6187	( 20 )
Hispanic	211	( 28 )	235	( 37 )	214	( 34 )	228	( 35 )	198	( 36 )	7642	( 25 )
Other (2)	20	( 3 )	18	( 3 )	18	( 3 )	20	( 3 )	11	( 2 )	681	( 2 )
<b>MALE EXPOSURE CATEGORY</b>												
MSM	421	( 56 )	330	( 52 )	341	( 54 )	348	( 53 )	275	( 50 )	22116	( 72 )
IDU	72	( 10 )	56	( 9 )	46	( 7 )	54	( 8 )	40	( 7 )	1683	( 5 )
MSM-IDU	55	( 7 )	37	( 6 )	61	( 10 )	53	( 8 )	54	( 10 )	2184	( 7 )
Heterosexual contact	22	( 3 )	20	( 3 )	10	( 2 )	16	( 2 )	18	( 3 )	362	( 1 )
Other/undetermined (3)	97	( 13 )	101	( 16 )	92	( 14 )	96	( 15 )	89	( 16 )	2366	( 8 )
<b>FEMALE EXPOSURE CATEGORY</b>												
IDU	29	( 4 )	22	( 3 )	32	( 5 )	27	( 4 )	20	( 4 )	569	( 2 )
Heterosexual contact	25	( 3 )	30	( 5 )	24	( 4 )	37	( 6 )	20	( 4 )	777	( 3 )
Other/undetermined (3)	25	( 3 )	37	( 6 )	30	( 5 )	21	( 3 )	30	( 5 )	686	( 2 )
<b>SERVICE PLANNING AREA</b>												
Antelope Valley[1]	16	( 2 )	6	( 1 )	9	( 1 )	8	( 1 )	6	( 1 )	264	( 1 )
San Fernando[2]	96	( 13 )	80	( 13 )	68	( 11 )	78	( 12 )	76	( 14 )	4515	( 15 )
San Gabriel [3]	55	( 7 )	49	( 8 )	44	( 7 )	53	( 8 )	41	( 8 )	2328	( 8 )
Metro[4]	245	( 33 )	213	( 34 )	221	( 35 )	206	( 32 )	186	( 34 )	12038	( 39 )
West[5]	36	( 5 )	27	( 4 )	27	( 4 )	26	( 4 )	24	( 4 )	1821	( 6 )
South[6]	97	( 13 )	88	( 14 )	105	( 17 )	91	( 14 )	62	( 11 )	3002	( 10 )
East[7]	46	( 6 )	44	( 7 )	46	( 7 )	45	( 7 )	28	( 5 )	1649	( 5 )
South Bay/LB[8]	132	( 18 )	108	( 17 )	96	( 15 )	110	( 17 )	106	( 19 )	4395	( 14 )
<b>Total (4)</b>	<b>746</b>	<b>( 100 )</b>	<b>633</b>	<b>( 100 )</b>	<b>636</b>	<b>( 100 )</b>	<b>652</b>	<b>( 100 )</b>	<b>546</b>	<b>( 100 )</b>	<b>30743</b>	<b>( 100 )</b>

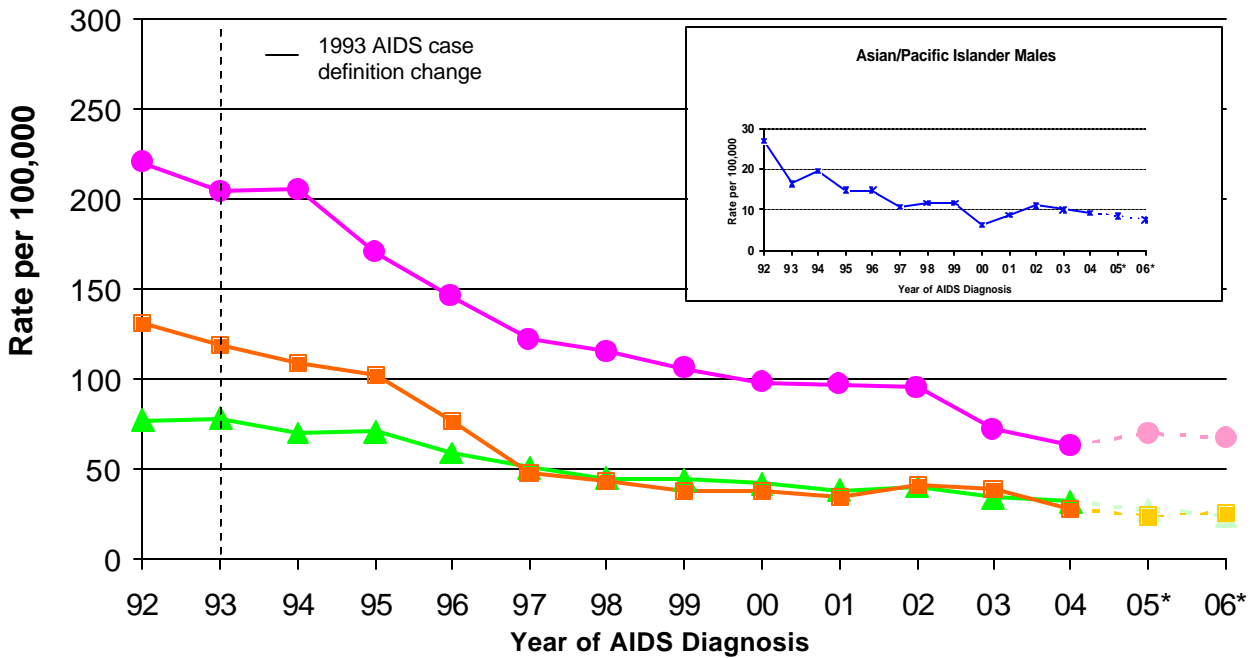
1. Data are provisional due to reporting delay.
2. Includes Asian, Pacific Islander, American Indian and Alaskan Native.
3. Includes hemophilia or coagulation disorder, transfusion recipient, mother with or at risk for HIV, confirmed other risk and risk not specified.
4. Includes persons of multiple races/ethnicities or unknown race/ethnicity or service planning area.

TABLE 21. CHARACTERISTICS OF PERSONS REPORTED WITH NON-AIDS HIV BY NON-NAME CODE - FINAL (1),  
 JULY 1, 2002 - APRIL 17, 2006  
 LOS ANGELES COUNTY

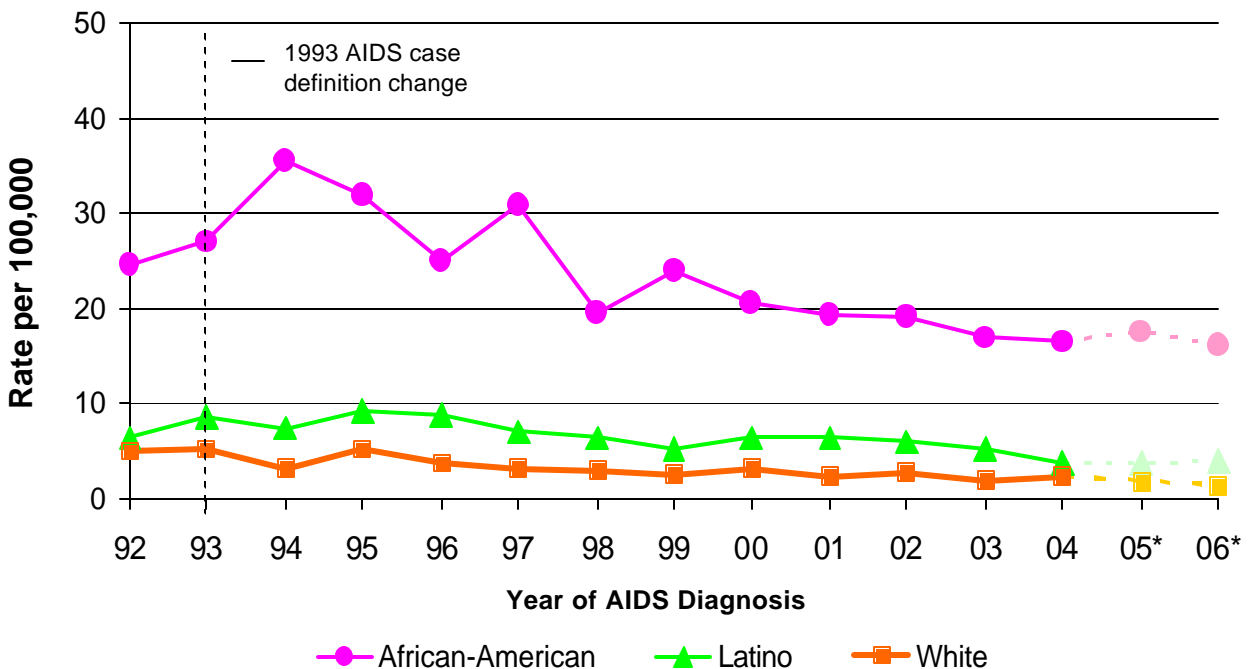
	Number	Percent (%)
<b>GENDER</b>		
Male	12866	84
Female	2252	15
Transgender	156	1
<b>AGE AT TIME OF DIAGNOSIS</b>		
<13	216	1
13- 19	459	3
20- 29	4290	28
30- 39	5999	39
40- 49	3185	21
50- 59	908	6
60+	218	1
<b>RACE/ETHNICITY</b>		
White	5451	36
Black	3542	23
Hispanic	5374	35
Asian/PI	379	2
AI/AN	55	<1
Other/Unknown	474	3
<b>EXPOSURE CATEGORY</b>		
MSM	9070	59
IDU	645	4
MSM/IDU	610	4
Hemophilia/Transfusion	73	<1
Heterosexual contact	934	6
Mother with/at risk for HIV	188	1
Undetermined	3755	25
<b>SERVICE PLANNING AREA</b>		
Antelope Valley[1]	162	1
San Fernando[2]	1979	13
San Gabriel [3]	894	6
Metro[4]	6532	43
West[5]	838	5
South[6]	1756	12
East[7]	847	6
South Bay/Long Beach[8]	2240	15
<b>Total (2)</b>	<b>15275</b>	<b>100</b>

1. Data are based on code-based HIV reporting system and are provisional due to reporting delay.
2. Includes persons of multiple race/ethnicities or unknown race/ethnicity, gender or service planning area.

**FIGURE 3. MALE ADULT/ADOLESCENT AIDS RATES BY RACE/ETHNICITY<sup>1</sup> AND YEAR OF DIAGNOSIS, LOS ANGELES COUNTY, 1992-2006**

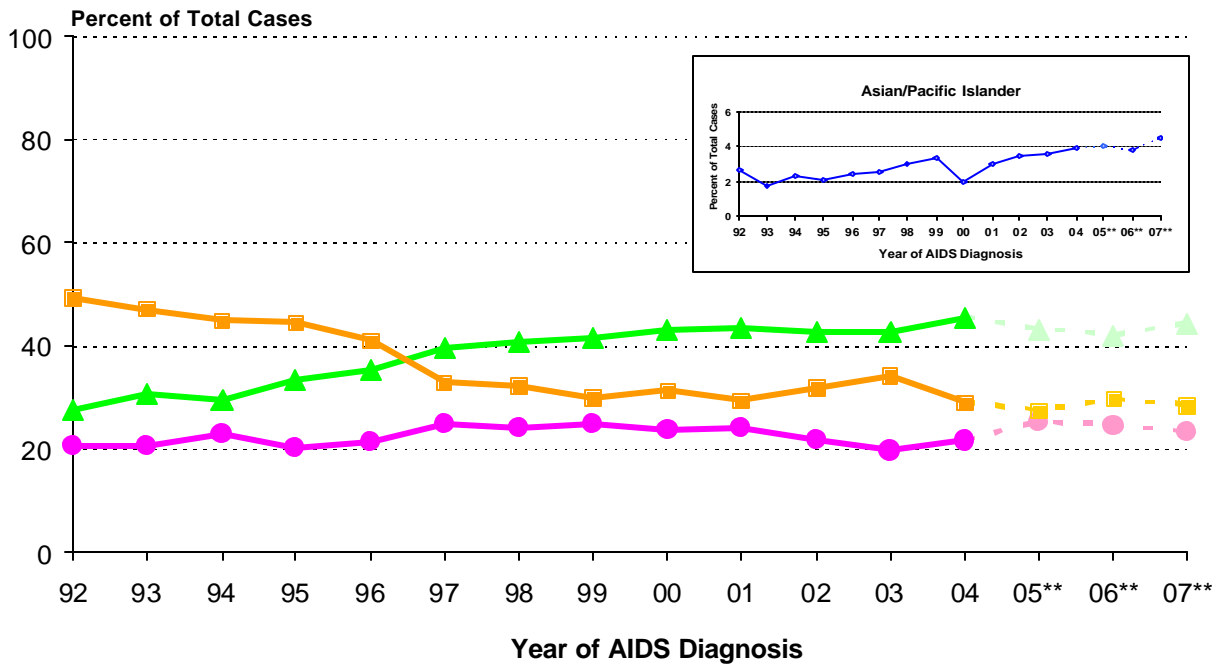


**FIGURE 4. FEMALE ADULT/ADOLESCENT AIDS RATES BY RACE/ETHNICITY<sup>1</sup> AND YEAR OF DIAGNOSIS, LOS ANGELES COUNTY, 1992-2006**

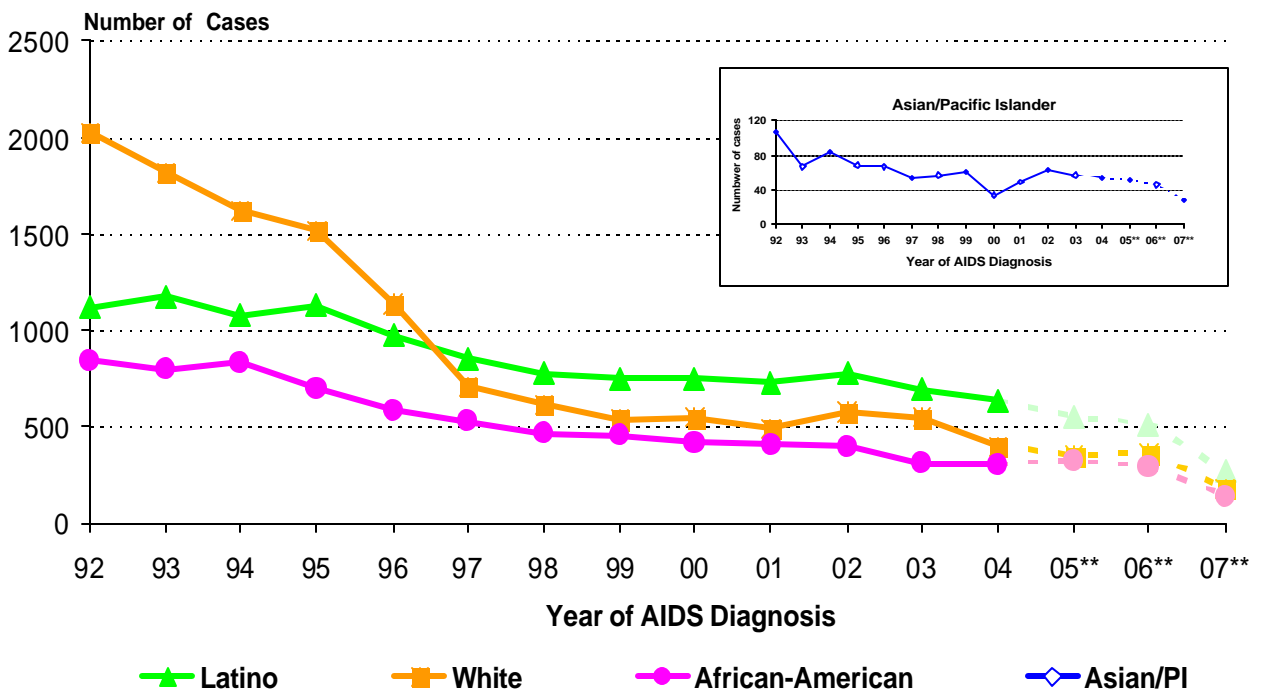


1. AIDS rates for Asian/Pacific Islander females, Native Americans and Alaskan Natives are not presented here because rates based on small numbers may result in unstable estimates.  
 \* Data are provisional due to reporting delay.

**FIGURE 5. PERCENT OF ADULT/ADOLESCENT AIDS CASES BY RACE/ETHNICITY\* AND YEAR OF DIAGNOSIS, LOS ANGELES COUNTY, 1992-2007**



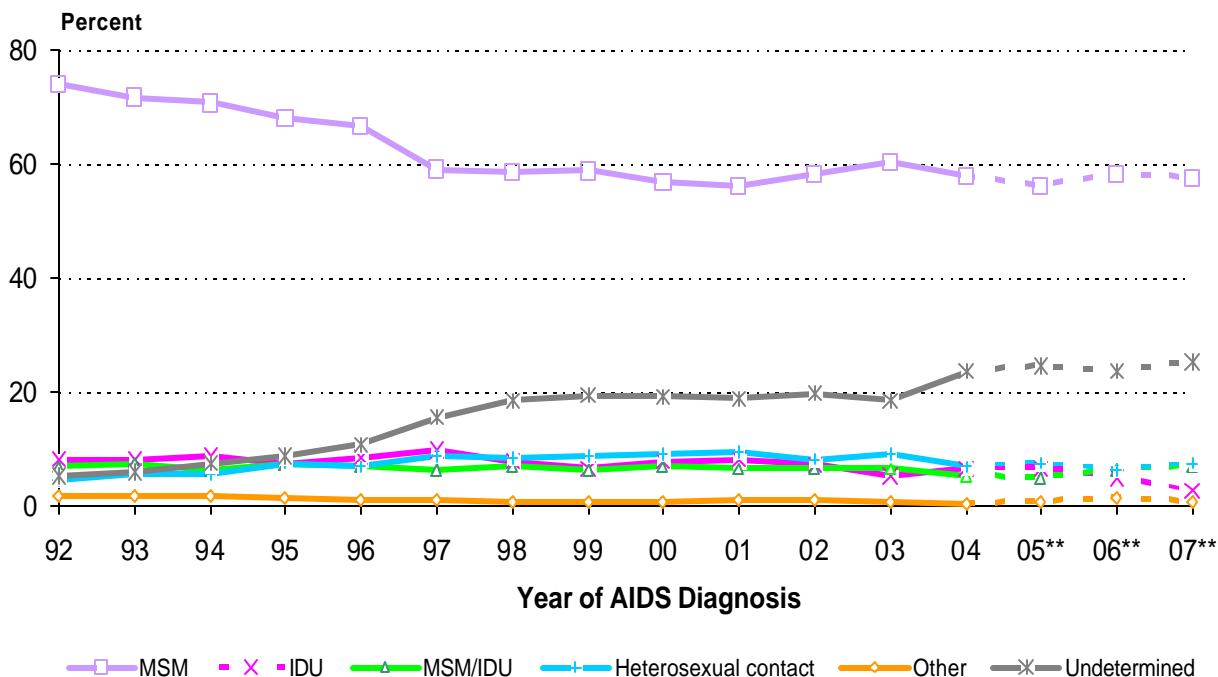
**FIGURE 6. NUMBER OF ADULT/ADOLESCENT AIDS CASES BY RACE/ETHNICITY\* AND YEAR OF DIAGNOSIS, LOS ANGELES COUNTY, 1992-2007**



\* American Indian and Alaskan Native are not presented here because small numbers may result in unstable estimates.

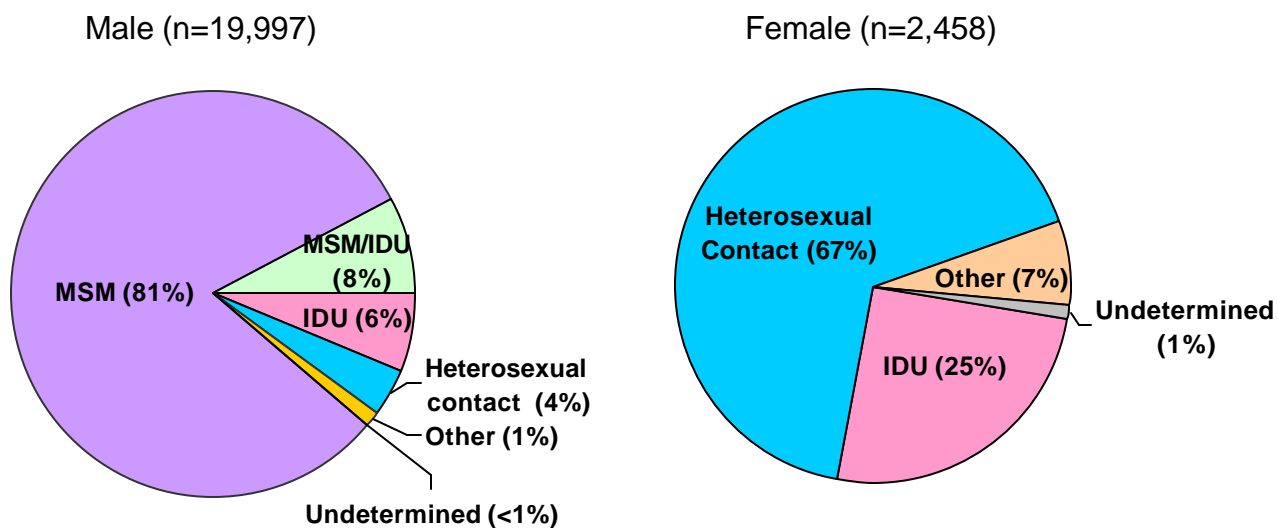
\*\* Data are provisional due to reporting delay.

**FIGURE 7. PERCENT OF ADULT/ADOLESCENT AIDS CASES BY MODE OF EXPOSURE\* AND YEAR OF DIAGNOSIS, LOS ANGELES COUNTY, 1992-2007**



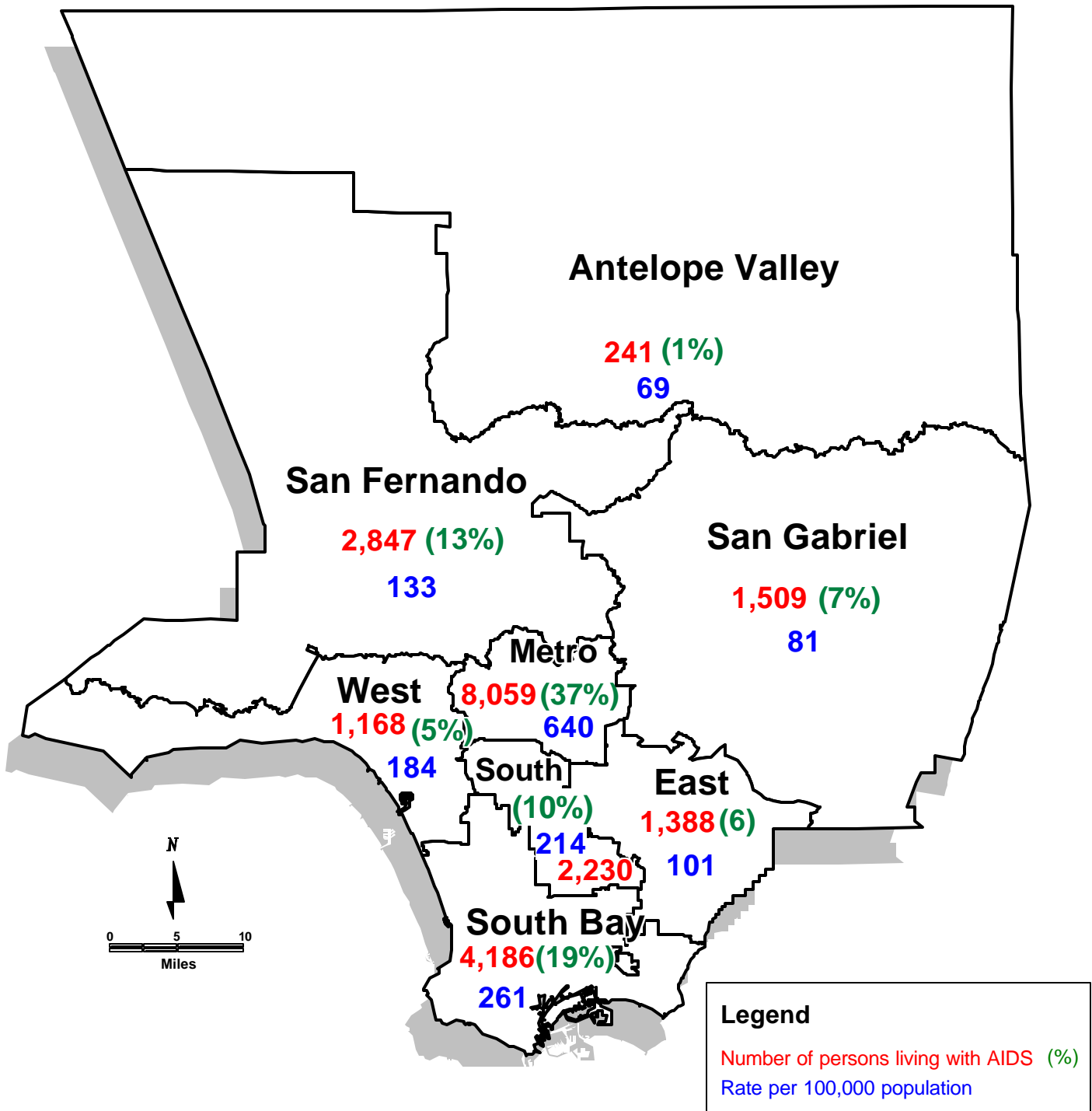
\* Other risks include hemophilia or coagulation disorder, transfusion recipient, mother with/at risk for HIV, and confirmed other risk.  
 \*\* Data are provisional due to reporting delay.

**FIGURE 8. ADJUSTED MODE OF EXPOSURE<sup>1</sup> FOR PERSONS LIVING WITH AIDS AS OF DECEMBER 31, 2007 BY GENDER IN LOS ANGELES COUNTY**



1. Persons who had no reported risk for HIV infection had been redistributed to a valid mode of exposure category based on the distribution of reclassified cases reported from 1993-2002 (see technical notes, page 28).

**FIGURE 9. PERSONS REPORTED LIVING WITH AIDS AS OF 12/31/2007 (1)  
AND LIVING AIDS RATE (2) PER 100,000 POPULATION  
BY SERVICE PLANNING AREA (SPA) (3) IN LA COUNTY, (N=22,455)**



1. Does not include 827(4%) persons living with AIDS with no information on SPA at time of AIDS diagnosis.
2. Rates are based on population estimates (PEPS) for 2006.
3. SPA refers to the SPA of residence at time of AIDS diagnosis.

HIV Epidemiology Program, Los Angeles County, Department of Public Health, 1/08

## Appendix 1: 1993 Revised Classification System for HIV Infection<sup>1</sup> and Expanded Surveillance Case Definition for Adolescents and Adults<sup>2</sup>

CD4+ T-cell Categories	Clinical categories		
	(A) Asymptomatic, acute (primary) HIV or PGL <sup>3</sup>	(B) Symptomatic, not (A) or (C) conditions	(C) AIDS-indicator conditions
(1) ≥500/μL	A1	B1	C1
(2) 200-499/μL	A2	B2	C2
(3) <200/μL AIDS-indicator T-cell count	A3	B3	C3

<sup>1</sup> Criteria for HIV infection for persons ages ≥13 years: a) repeatedly reactive screening test for HIV antibody (e.g., enzyme immunoassay) with specific antibody identified by the use of supplemental tests (e.g., Western blot, immunofluorescence assay); b) direct identification of virus in host tissues by virus isolation; c) HIV antigen detection; or d) a positive result on any other highly specific licensed test for HIV.

<sup>2</sup> The shaded cells illustrate the expanded AIDS surveillance case definition. Persons with an AIDS-indicator condition (Category C) as well as those with CD4+ T-lymphocyte counts <200/μL (Categories A3 or B3) are reportable as AIDS cases in the United States and Territories, effective January 1, 1993.

<sup>3</sup> PGL=persistent generalized lymphadenopathy.

### Clinical Conditions Included in the 1993 AIDS Surveillance Case Definition

---

- Candidiasis of bronchi, trachea, or lungs
- Candidiasis, esophageal
- Cervical cancer, invasive\*
- Coccidioidomycosis, disseminated or extrapulmonary
- Cryptococcosis, extrapulmonary
- Cryptosporidiosis, chronic intestinal (>1 month duration)
- Cytomegalovirus disease (other than liver, spleen, or nodes)
- Cytomegalovirus retinitis (with loss of vision)
- Encephalopathy, HIV-related
- Herpes simplex: chronic ulcer(s) (>1 month duration) or bronchitis, pneumonitis, or esophagitis
- Histoplasmosis, disseminated or extrapulmonary
- Isosporiasis, chronic intestinal (>1 month duration)
- Kaposi's sarcoma
- Lymphoma, Burkitt's (or equivalent term)
- Lymphoma, immunoblastic (or equivalent term)
- Lymphoma, primary in brain
- *Mycobacterium avium* complex or *M. kansasii*, disseminated or extrapulmonary
- *Mycobacterium tuberculosis*, any site (pulmonary\* or extrapulmonary)
- *Pneumocystis carinii* pneumonia
- Pneumonia, recurrent\*
- Progressive multifocal leukoencephalopathy
- *Salmonella* septicemia, recurrent
- Toxoplasmosis of brain
- Wasting syndrome due to HIV

\* Added in the 1993 expansion of the AIDS surveillance case definition.

## **Appendix 2: Technical Notes**

### **Reporting Delay**

Reporting delay is defined as the time interval between the date an AIDS diagnosis was made and the date the case was reported. The median reporting delay for all cases reported in 2006 was 5 months (range 0 to 281 months). The impact of report delay must be considered when evaluating trends in case numbers and rates over time (Figure 1-7, Tables 1, 4-8, 10, 13-14, 18 and 20).

### **Rates**

For Figure 3-4, Table 4, Table 13- 15, and Table 17-19, AIDS case rates are calculated using population estimates (PEPS) for 1992-2006 that were prepared by Walter R. McDonald & Associates, Inc. (WRMA) for Urban Research, LA County CAO. Conforming to standard criterion used by the National Center for Health Statistics, rates are considered unreliable when the relative standard error of the rate is greater than or equal to 23%--that is, when rates are based on less than 20 observations.

### **Race and ethnicity**

Mandated collection of race and ethnicity data was implemented in January 1, 2003 as required by the OMB Statistical Policy Directive 15. A minimum of 5 race categories should be collected including American Indian or Alaska Native, Asian, black or African American, Native Hawaiian or Other Pacific Islander, and white. Additionally, systems must be able to retain information when multiple racial categories are reported. Two ethnicity categories should be collected regardless of race: Hispanic and non-Hispanic.

Race and Ethnicity in this report are grouped using the following criteria exclusively: A record is considered to be 'Hispanic' if so indicated in race or ethnicity field, regardless of any other race information found on the record. When not indicated as 'Hispanic', a record is considered to be 'American Indian/Alaskan Native' if the race field contains AI/AN information, regardless of any other race information found on the record. A record is considered to be 'Asian/Pacific Islander' when either indicated as Asian or Native Hawaiian/Pacific Islander, or both in the race fields. Aside from the above criteria, a record is categorized as 'Multi-race' when more than one race are indicated in the above race fields. All other records with a single race indicated are placed in the corresponding race category. Persons with multiple racial categories or unknown race are included in the total numbers in Table 2-4, Table 11 and Table 15-21.

### **Exposure Categories**

Exposure categories are assigned in a hierarchical fashion (listed from highest to lowest in the column headed "Exposure Category"). Cases for which more than one exposure category have been identified are assigned to the category listed highest in the hierarchy. For example, a man who reports sexual contact with another man and heterosexual contact with an HIV-positive woman would be classified as "male-male sexual contact." The only exception to this rule includes those men who report both sexual contact with another man and injection-drug use. A separate exposure category has been created for these cases.

The "Undetermined" exposure category includes persons with no history of exposure to HIV through one of the defined exposure categories. Cases reported as undetermined include some persons still under investigation. If the investigation identifies a mode of exposure, the case is reclassified into the corresponding exposure category. Because recently reported AIDS cases are more likely to be reported without sufficient risk factor information, recent AIDS incidence in some transmission categories will be underestimated unless an adjustment is made. For figures that show the distribution of AIDS cases by adjusted mode of exposure, persons who had no reported risk for HIV exposure were redistributed to other valid exposure categories based on the sex-, and race-specific distribution of the cases reported from 1993 to 2002 and reclassified to a valid exposure category.

### **AIDS-Indicator Conditions**

At the time of initial case report, all available information about AIDS-defining conditions is collected. However, after a case has been reported, systematic follow-up is not done to identify subsequent AIDS-defining conditions. Therefore, the information presented in Table 12 reflects initial AIDS-defining condition(s) and should be considered a minimum estimate of all AIDS-defining conditions.

All persons meeting the CDC AIDS case or HIV definition are reportable by name as required by the *California Code of Regulations, Title 17, Section 2500/2600/2641.5-2643.20*. If you have questions on how to report a case, would like a case report form and/or information on the case definition, would like assistance establishing an HIV/AIDS surveillance system, or receive the semi-annual surveillance summary and other periodic reports, contact the HIV Epidemiology Program at the address below:

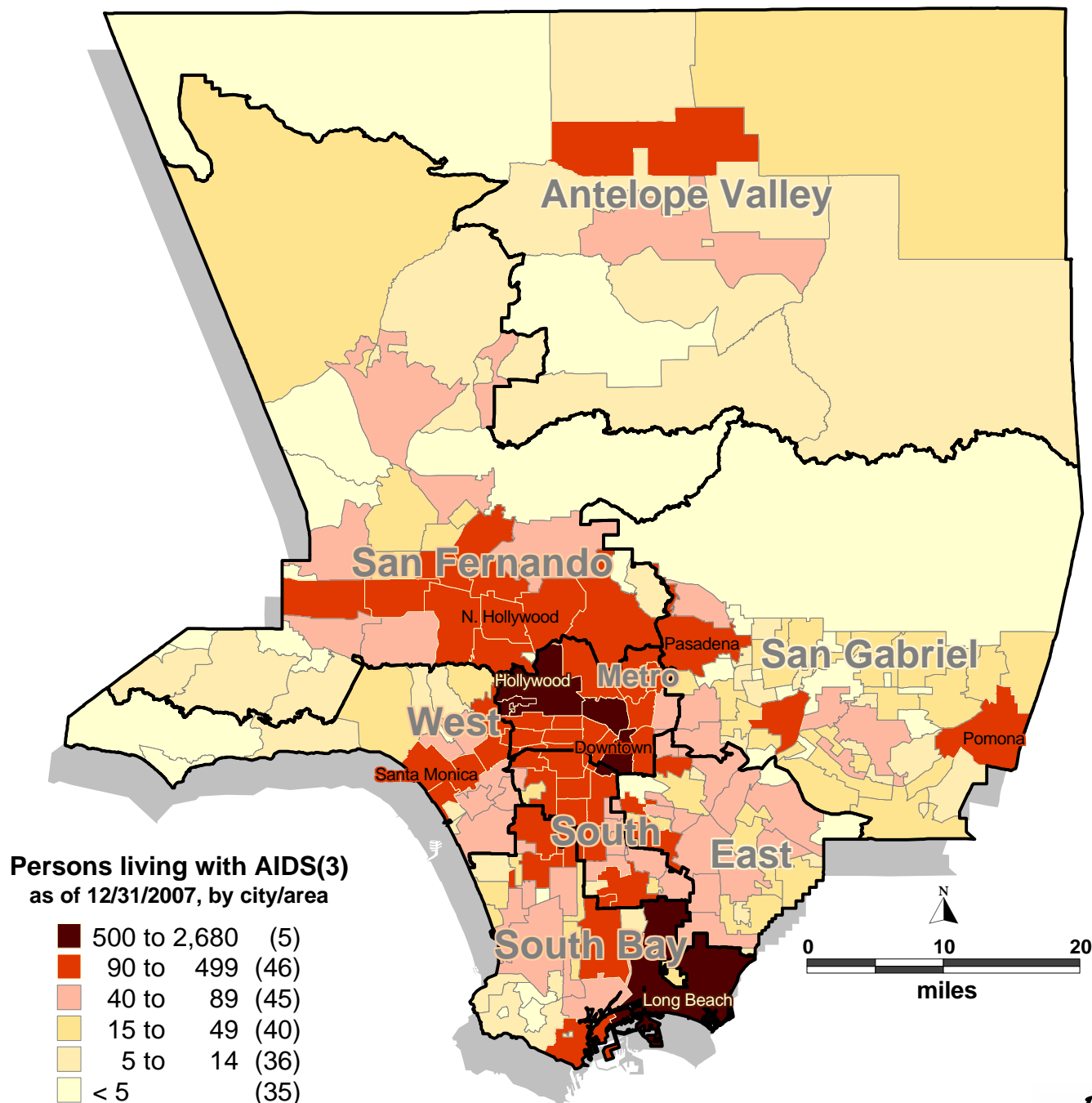
HIV Epidemiology Program  
Los Angeles County Department of Public Health  
600 South Commonwealth Avenue, Suite 1260  
Los Angeles, California 90005  
Phone: (213) 351-8516  
FAX: (213) 487-4683  
Email: [hivepiemail@ph.lacounty.gov](mailto:hivepiemail@ph.lacounty.gov)

## **DOCUMENTING HIV RISK (MODE OF HIV EXPOSURE)**

*Timely information on transmission risk for persons diagnosed with HIV and AIDS is important for HIV prevention planning and resource allocation.*

- ✓ In over 20% of persons reported with HIV and AIDS, providers did not document and/or report a mode of exposure to HIV.
- ✓ The diagnosing provider should always ask patients and clients about their HIV exposure risks and document them in both the medical record and the case report form.
- ✓ Exposure categories for HIV transmission include:
  1. Men who have sex with men
  2. Recreational injection drug users
  3. Recipients of blood transfusions, organ/other tissue transplants
  4. Sexual partners of HIV-infected persons
  5. Sexual partners of injection drug users
  6. Female sexual partners of men who have sex with men
  7. Sexual partners of persons with clotting disorders, hemophiliacs
  8. Infants born of and/or breast-fed by HIV-infected women

**FIGURE 10. PERSONS REPORTED LIVING WITH AIDS AS OF 12/31/2007(1)  
BY CITY/AREA(2) AND SERVICE PLANNING AREA (SPA)  
IN LOS ANGELES COUNTY (N=22,455)**



1. Data are provisional due to reporting delay for newly diagnosed cases and death reports.
2. Los Angeles City is broken down into "areas" or geographical units. The map does not reflect the actual boundaries of the cities/areas. Instead, the cities/areas are aggregated from the associated census tracts based on centroids.
3. Does not include 1,503 persons (7%) who had no specific address at time of the AIDS diagnosis.